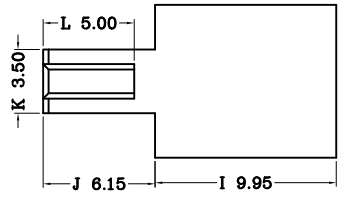
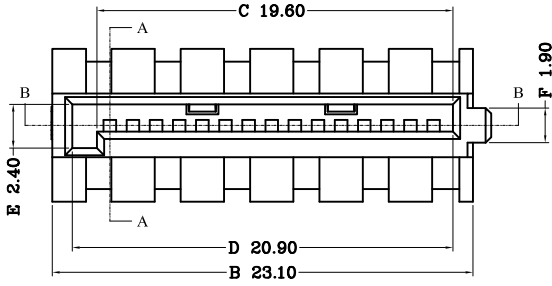
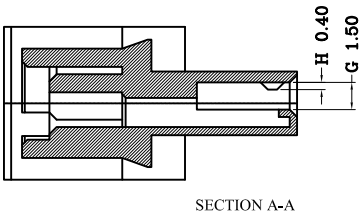


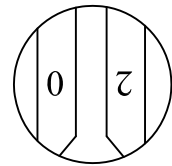
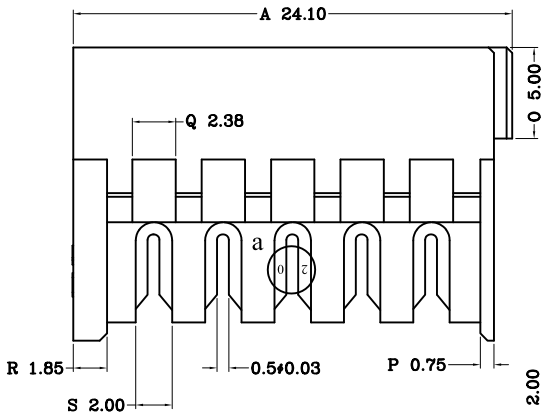
1	2	3	4
---	---	---	---

版本REV	日期
A	2014-01-15

A

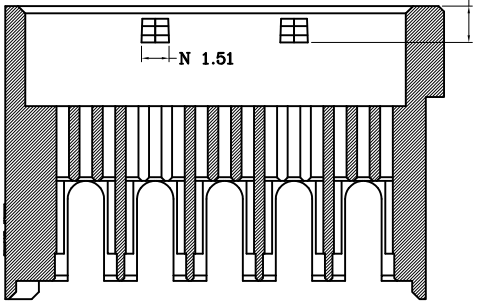


B



a (3:1 20AWG)

C



SECTION B-B

D

NOTE:

- 1. TERMINAL MATERIAL THICKNESS: 0.30mm
- 2. TERMINAL MATERIAL: PHOSPHOR BRONZE
- 3. CONNETOR MATERIAL: PBT30%GF
- 4. TERMINAL FINISH: CONTACT SELECTIVE GOLD-PLATED.
- 5. ACCEPT TERMINAL: 6758-DB
- 6. APPLICABLE WIRE: 1007# 20AWG

E

一般公差: GENERAL TOLERANCE		更改說明: REV.DESCRPTION		更改說明: REV.DESCRPTION	
尺寸範圍DIM		①		④	
.0	±0.20	②		⑤	
.00	±0.15	③		⑥	
.000	±0.10	核准APPD		模型:	料號: ITEM NO
文件編號		審核CHD		MODEL	6758-DH-A-20
SC-EW-11		繪圖DWN	莫才芬	2014-01-15	
比例: SCALE				規格: SPEC	SATA 90°