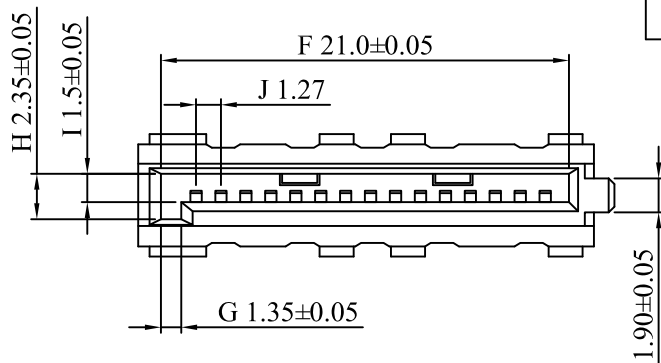


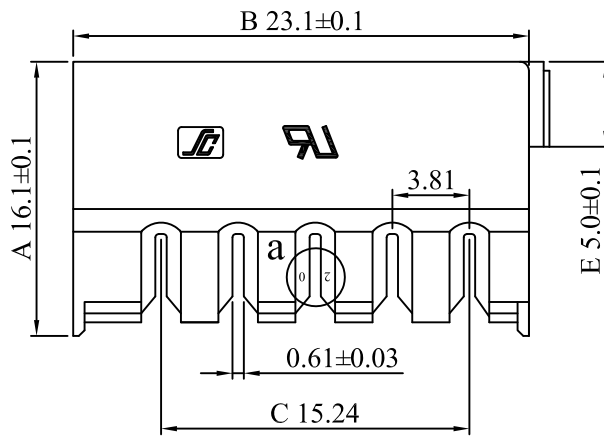
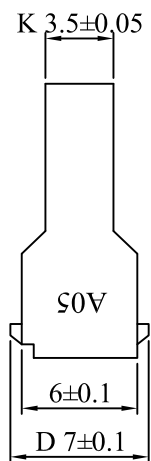
	1	2	3	4
--	---	---	---	---

版本REV	日期
A1	2008-11-13

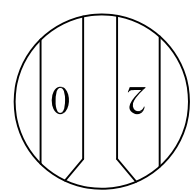
A



B



C



a (3:1 20AWG)

D

NOTE:

- 1.TERMINAL MATERIAL THICKNESS: 0.30mm
- 2.TERMINAL MATERIAL: PHOSPHOR BRONZE
- 3.CONNETOR MATERIAL: PBT 30% GF
- 4.TERMINAL FINISH: CONTACT SELECTIVE GOLD-PLATED.
- 5.ACCEPT TERMINAL: 6758-DB
- 6.APPLICABLE WIRE: 1007# 20AWG

E

一般公差: GENERAL TOLERANCE		更改說明: REV.DESCRPTION		更改說明: REV.DESCRPTION	
尺寸範圍DIM		① 去掉SC印字		④	
.0	±0.20	②		⑤	
.00	±0.15	③		⑥	
.000	±0.10	核准APPD		模型:	料號: ITEM NO
文件編號		審核CHD		MODEL	6758-DH-20
SC-EW-11		繪圖DWN	黃婷 2008.11.13		
比例: SCALE				規格: SPEC	SATA 90°