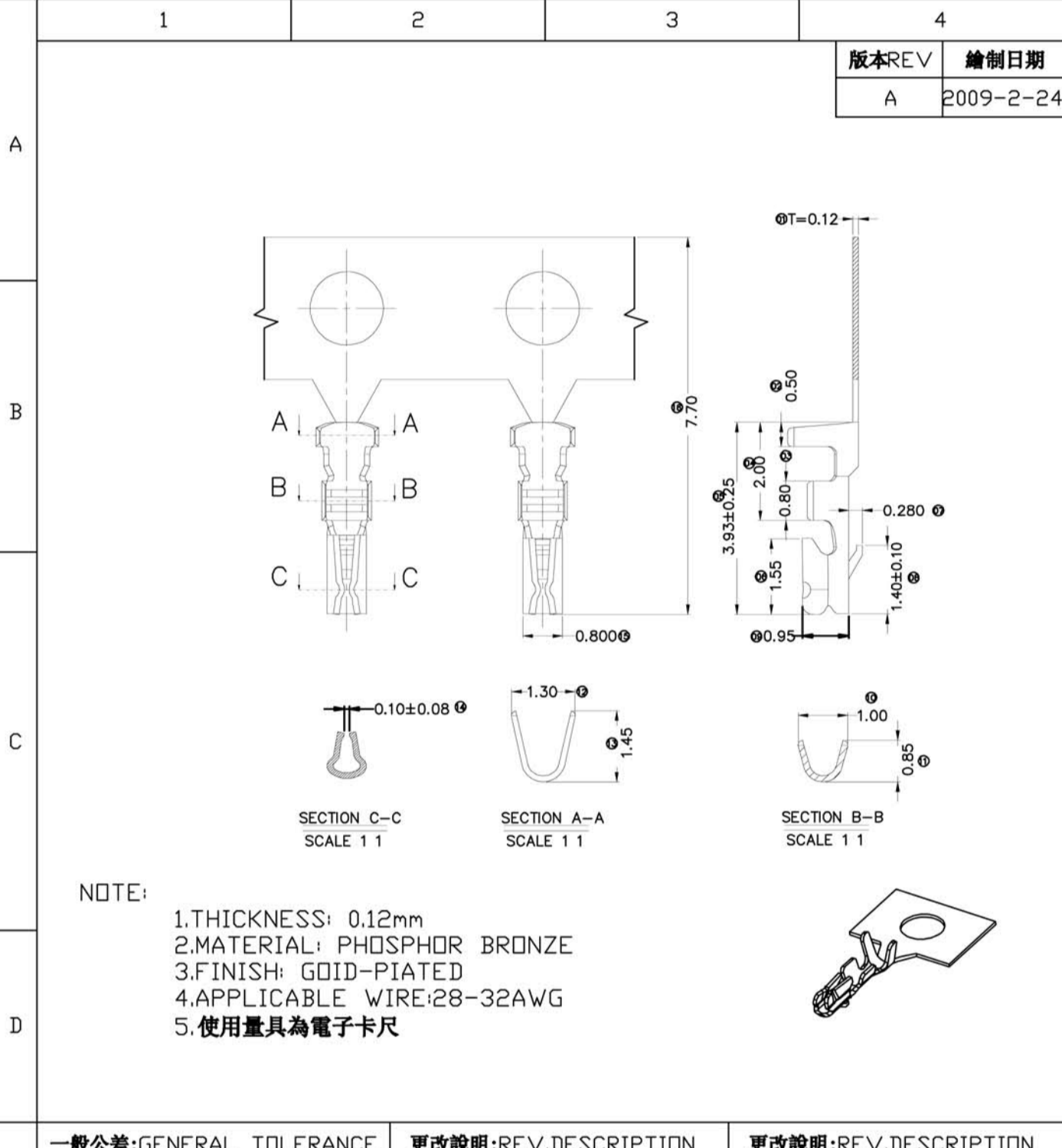


NOTE:

- Material N0-PA66 94V-0
- Plug the Pin & special No. D-Ultra-thin buckles on both sides
- Color Blank-natural color
- HF-Halogen Free

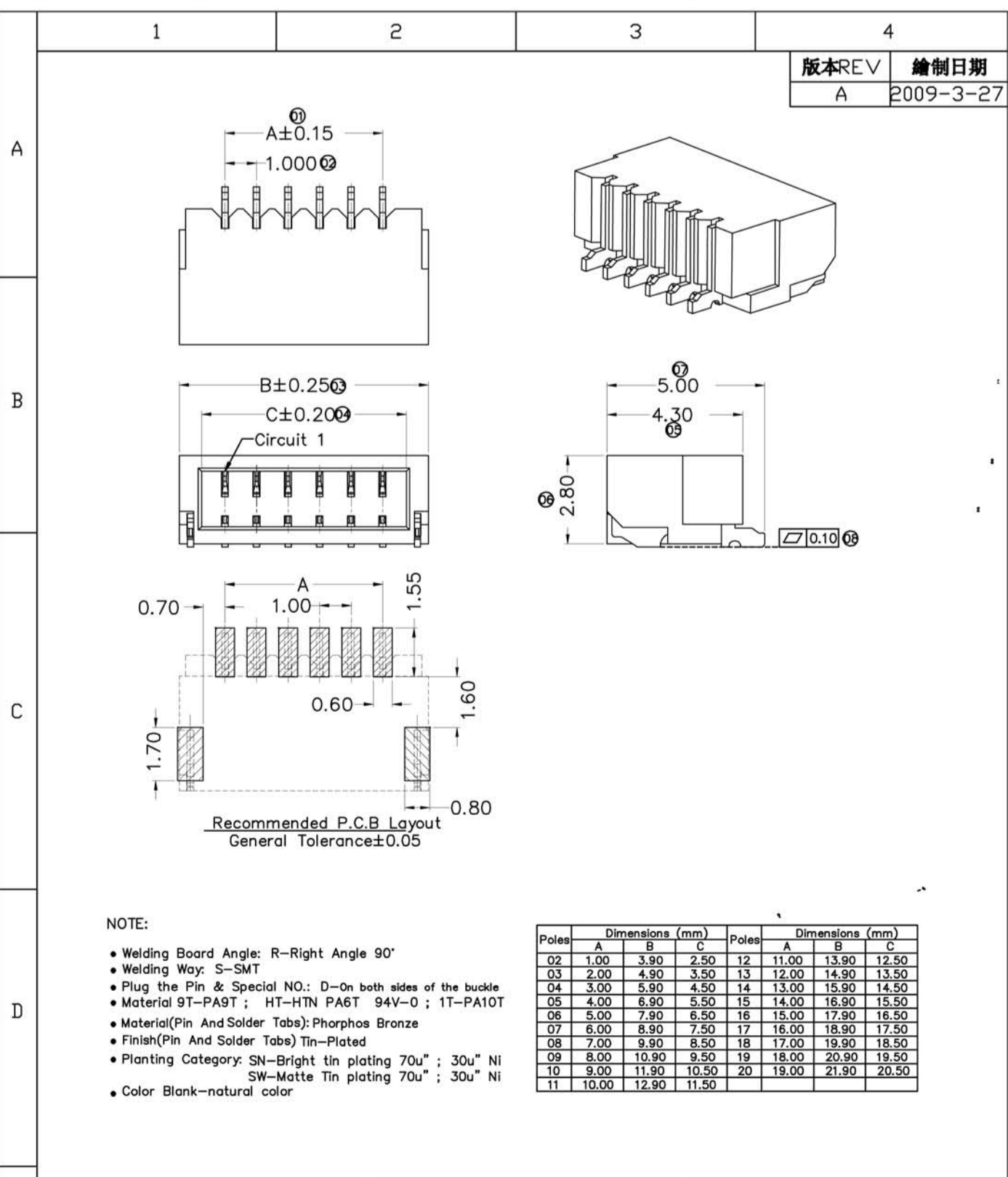
一般公差:GENERAL TOLERANCE		更改說明:REV.DESCRPTION		更改說明:REV.DESCRPTION	
尺寸範圍DIM		△		△	
10.01以上之尺寸	±0.30	△		△	
10.00以內之尺寸	±0.20	△		△	
孔位	±0.10	核准APPD		模型: MODEL	料號: ITEM NO
文件編號	SC-EW-11	審核CHD		A1010H-00-NP	
		繪圖DWN	黃婷 2009-3-27		
比例: SCALE	SHIH CHUAN ELECTRONICS			規格: SPEC 1.00 mm Crimp Style Commctcors	



NOTE:

- 1.THICKNESS: 0.12mm
- 2.MATERIAL: PHOSPHOR BRONZE
- 3.FINISH: GOLD-PIATED
- 4.APPLICABLE WIRE:28-32AWG
- 5.使用量具為電子卡尺

一般公差:GENERAL TOLERANCE		更改說明:REV.DESCRPTION		更改說明:REV.DESCRPTION	
尺寸範圍DIM		△		△	
.0	±0.20	△		△	
.00	±0.15	△		△	
.000	±0.10	核准APPD		模型: MODEL	料號: ITEM NO
文件編號	SC-A-2001T	審核CHD		A1010T-00	
		繪圖DWN	LIAO 2009-2-24		
比例: SCALE	SHIH CHUAN ELECTRONICS			規格: SPEC 1.0MM	



NOTE:

- Welding Board Angle: R-Right Angle 90°
- Welding Way: S-SMT
- Plug the Pin & Special NO.: D-On both sides of the buckle
- Material 9T-PA9T ; HT-HTN PA6T 94V-0 ; 1T-PA10T
- Material(Pin And Solder Tabs): Phosphor Bronze
- Finish(Pin And Solder Tabs) Tin-Plated
- Planting Category: SN-Bright tin plating 70u" ; 30u" Ni SW-Matte Tin plating 70u" ; 30u" Ni
- Color Blank-natural color

一般公差:GENERAL TOLERANCE		更改說明:REV.DESCRPTION		更改說明:REV.DESCRPTION	
尺寸範圍DIM		△		△	
10.01以上之尺寸	±0.20	△		△	
10.00以內之尺寸	±0.15	△		△	
孔位	±0.02	核准APPD		模型: MODEL	料號: ITEM NO
文件編號	SC-EW-11	審核CHD		A1010W-R-00-NP	
		繪圖DWN	黃婷 2009-3-27		
比例: SCALE	SHIH CHUAN ELECTRONICS			規格: SPEC 1.00 mm Crimp Style Connectors	