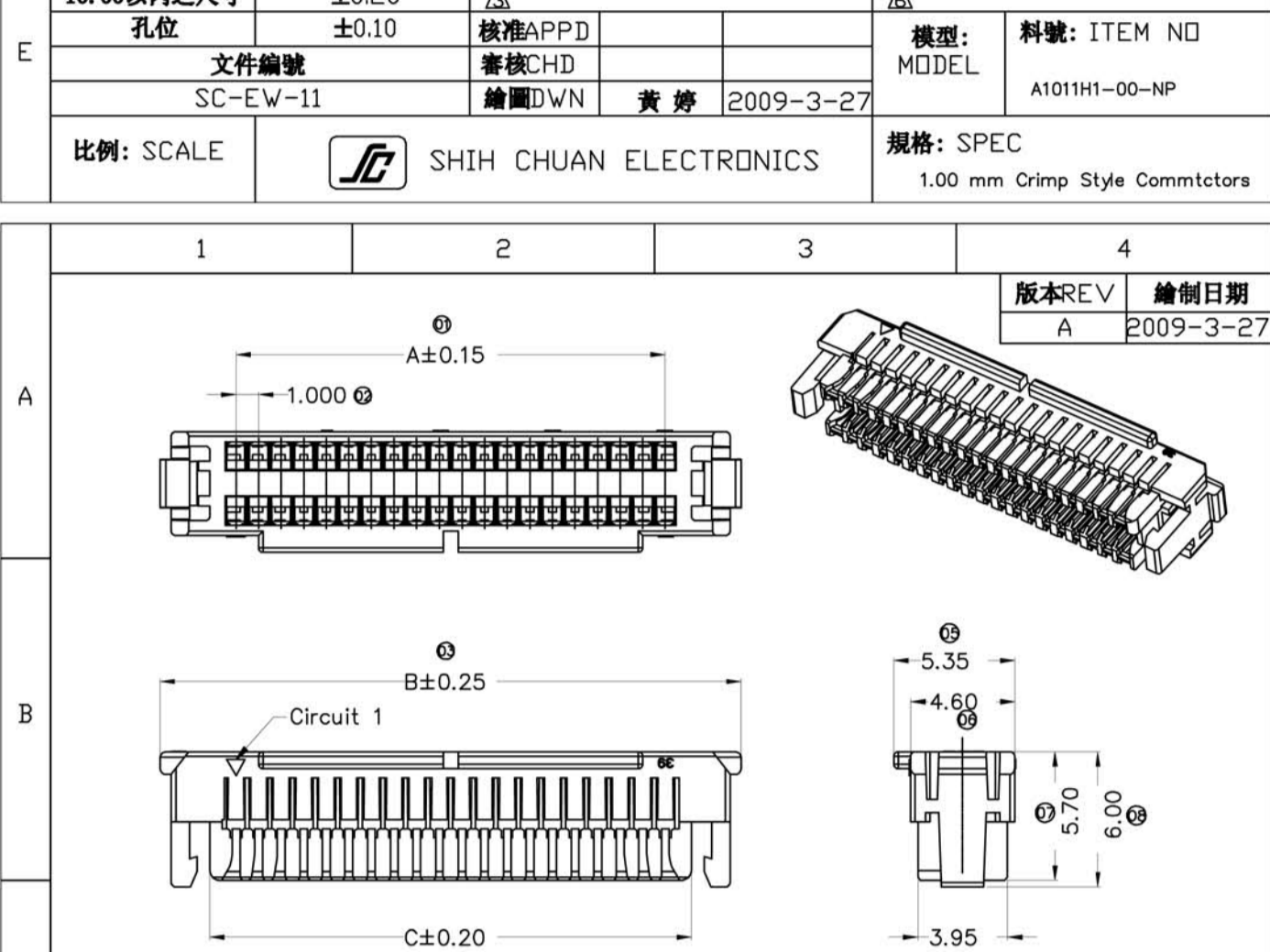


NOTE:

- Material: N0-PA66 94V-0
- Welding Board Angle: Blank-ordinary
- Plug the Pin & special No.
- Color: Blank-Natural color
- HF-Halogen free

Poles	Dimensions(mm)			Poles	Dimensions(mm)		
	A	B	C		A	B	C
02	1.00	4.60	3.00	12	11.00	14.60	13.00
03	2.00	5.60	4.00	13	12.00	15.60	14.00
04	3.00	6.60	5.00	14	13.00	16.60	15.00
05	4.00	7.60	6.00	15	14.00	17.60	16.00
06	5.00	8.60	7.00	16	15.00	18.60	17.00
07	6.00	9.60	8.00	20	19.00	22.60	21.00
08	7.00	10.60	9.00	22	21.00	24.60	23.00
09	8.00	11.60	10.00	26	25.00	28.60	27.00
10	9.00	12.60	11.00	30	29.00	32.60	31.00
11	10.00	13.60	12.00				

一般公差: GENERAL TOLERANCE	更改說明: REV.DESCRPTION	更改說明: REV.DESCRPTION
尺寸範圍 DIM	△	△
10.01以上之尺寸	±0.30	△
10.00以内之尺寸	±0.20	△
孔位	±0.10	核准 APPD
文件編號	審核 CHD	模型: MODEL
SC-EW-11	繪圖 DWN 黃婷 2009-3-27	料號: ITEM NO A1011H1-00-NP
比例: SCALE	規格: SPEC 1.00 mm Crimp Style Commctcors	

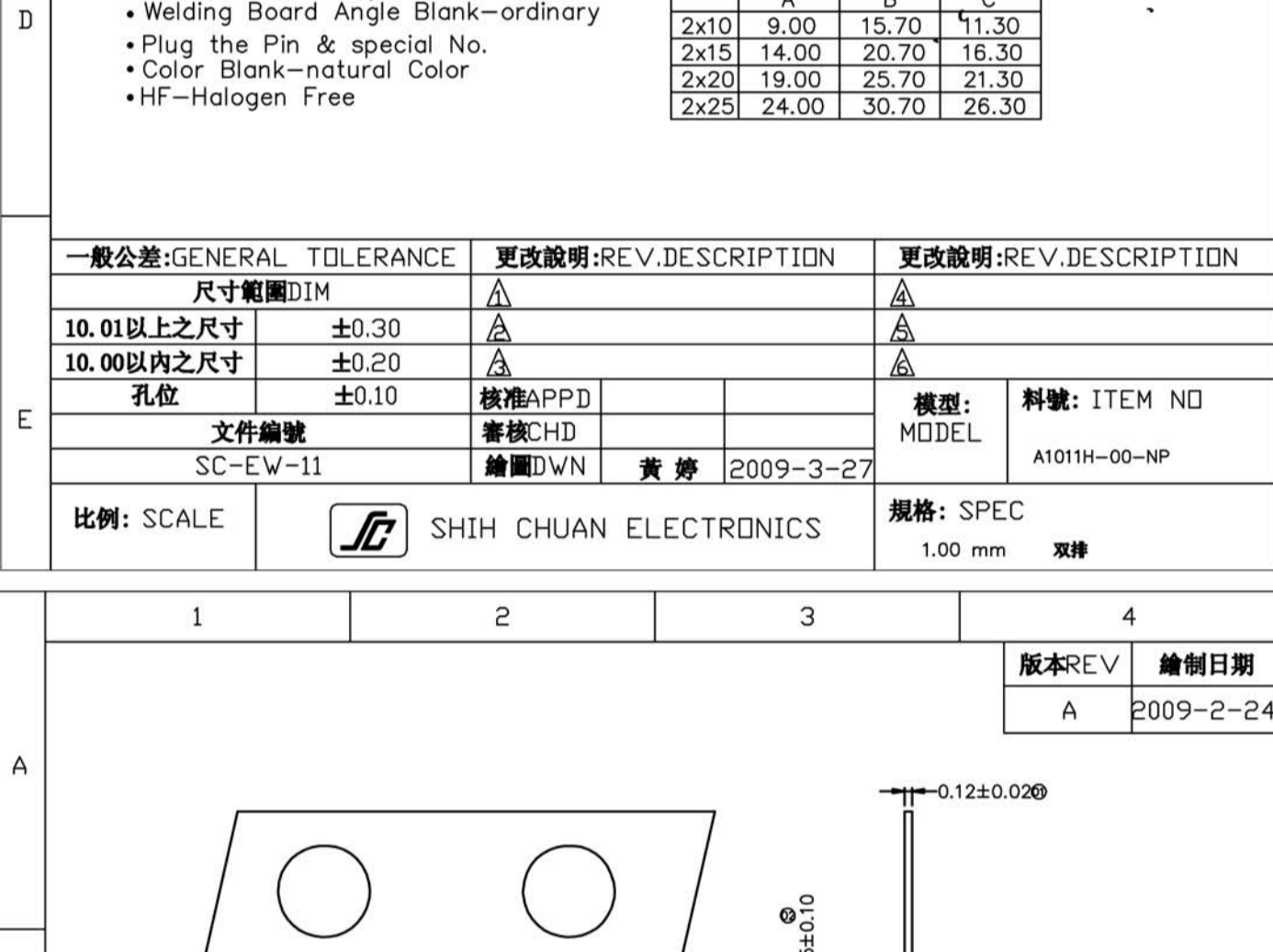


NOTE:

- Material: PT-PBT ; N0-PA66 94V-0
- Welding Board Angle: Blank-ordinary
- Plug the Pin & special No.
- Color: Blank-natural color
- HF-Halogen Free

Poles	Dimensions(mm)		
	A	B	C
2x10	9.00	15.70	11.30
2x15	14.00	20.70	16.30
2x20	19.00	25.70	21.30
2x25	24.00	30.70	26.30

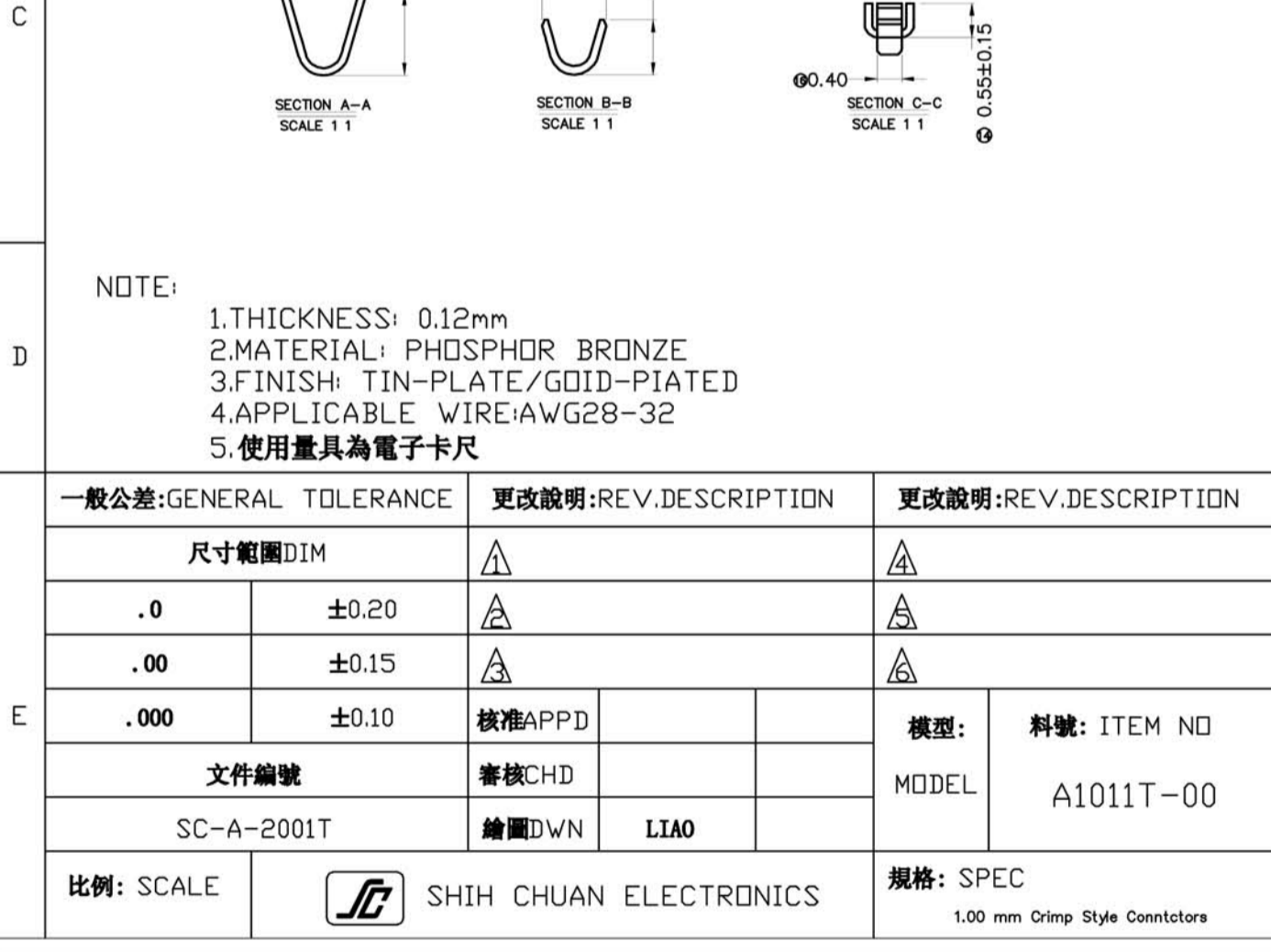
一般公差: GENERAL TOLERANCE	更改說明: REV.DESCRPTION	更改說明: REV.DESCRPTION
尺寸範圍 DIM	△	△
10.01以上之尺寸	±0.30	△
10.00以内之尺寸	±0.20	△
孔位	±0.10	核准 APPD
文件編號	審核 CHD	模型: MODEL
SC-EW-11	繪圖 DWN 黃婷 2009-3-27	料號: ITEM NO A1011H-00-NP
比例: SCALE	規格: SPEC 1.00 mm 雙排	



NOTE:

- THICKNESS: 0.12mm
- MATERIAL: PHOSPHOR BRONZE
- FINISH: TIN/PLATED
- APPLICABLE WIRE: AWG28-32
- 使用量具為電子卡尺

一般公差: GENERAL TOLERANCE	更改說明: REV.DESCRPTION	更改說明: REV.DESCRPTION
尺寸範圍 DIM	△	△
.0	±0.20	△
.00	±0.15	△
.000	±0.10	核准 APPD
文件編號	審核 CHD	模型: MODEL
SC-A-2001T	繪圖 DWN LIAO	料號: ITEM NO A1011T-00
比例: SCALE	規格: SPEC 1.00 mm Crimp Style Connctcors	



NOTE:

- Material: 9T-PA9T 94V-0 ; HT-HTN 94V-0 ; 1T-PA10T
- Welding Board Angle: R-Right Angle 90'
- Welding Way: S-SMT
- Planting Category: V01: All Gold Flash ; SW-Fog Tin plating
- Color: Blank-natural color
- Material(Pin And Solder Tabs): Phosphor Bronze

Poles	Dimensions(mm)				Poles	Dimensions(mm)			
	A	B	C	D		A	B	C	D
02	1.00	4.80	3.10	2.50	17	16.00	19.80	18.10	17.50
03	2.00	5.80	4.10	3.50	18	17.00	20.80	19.10	18.50
04	3.00	6.80	5.10	4.50	19	18.00	21.80	20.10	19.50
05	4.00	7.80	6.10	5.50	20	19.00	22.80	21.10	20.50
06	5.00	8.80	7.10	6.50	21	20.00	23.80	22.10	21.50
07	6.00	9.80	8.10	7.50	22	21.00	24.80	23.10	22.50
08	7.00	10.80	9.10	8.50	23	22.00	25.80	24.10	23.50
09	8.00	11.80	10.10	9.50	24	23.00	26.80	25.10	24.50
10	9.00	12.80	11.10	10.50	25	24.00	27.80	26.10	25.50
11	10.00	13.80	12.10	11.50	26	25.00	28.80	27.10	26.50
12	11.00	14.80	13.10	12.50	27	26.00	29.80	28.10	27.50
13	12.00	15.80	14.10	13.50	28	27.00	30.80	29.10	28.50
14	13.00	16.80	15.10	14.50	29	28.00	31.80	30.10	29.50
15	14.00	17.80	16.10	15.50	30	29.00	32.80	31.10	30.50
16	15.00	18.80	17.10	16.50					

一般公差: GENERAL TOLERANCE	更改說明: REV.DESCRPTION	更改說明: REV.DESCRPTION
尺寸範圍 DIM	△	△
10.01以上之尺寸	±0.20	△
10.00以内之尺寸	±0.15	△
孔位	±0.02	核准 APPD
文件編號	審核 CHD	模型: MODEL
SC-EW-11	繪圖 DWN 黃婷 2009-3-27	料號: ITEM NO A1011W-R-00-NP
比例: SCALE	規格: SPEC 1.00 mm Crimp Style Connectors	