

1

2

3

4

版本REV

繪制日期

A

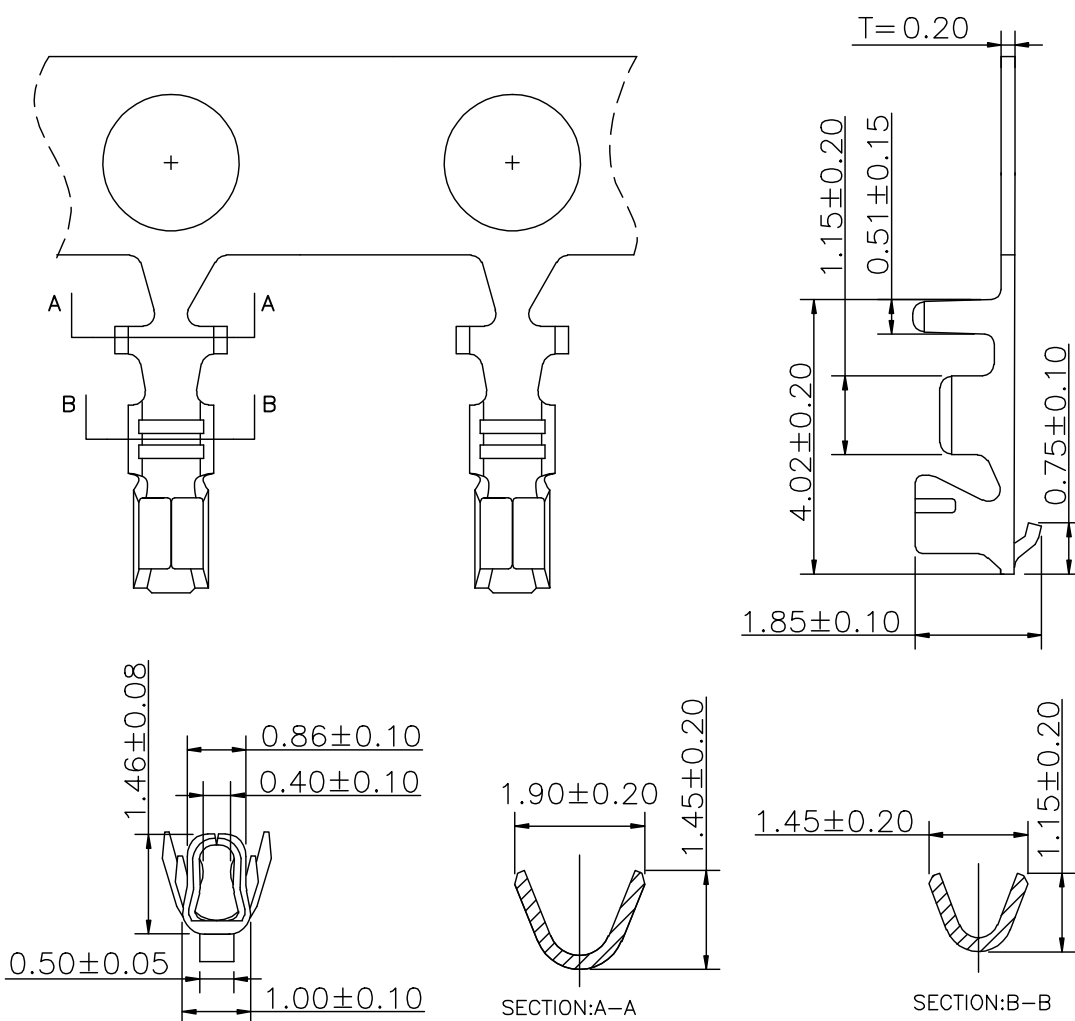
2009-2-24

A

B

C

D



NOTE:

1. THICKNESS: 0.20mm
2. MATERIAL: PHOSPHOR BRONZE
3. FINISH: TIN PIATED
4. APPLICABLE WIRE: AWG26-32
5. 使用量具為電子卡尺

一般公差: GENERAL TOLERANCE

更改說明: REV. DESCRIPTION

更改說明: REV. DESCRIPTION

尺寸範圍DIM

①

④

.0

 ± 0.30

②

⑤

.00

 ± 0.20

③

⑥

.000

 ± 0.10

核准APPD

朱小华

2009-2-24

模型:

料號: ITEM NO

文件編號

審核CHD

MODEL

A1501T0P-00

SC-A-2001T

繪圖DWN

Liaozting

2009-2-24

比例: SCALE



SHIH CHUAN ELECTRONICS

規格: SPEC

ZH 1.5-T

1

2

3

4

版本REV

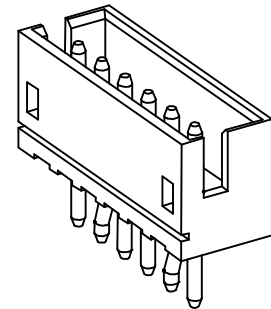
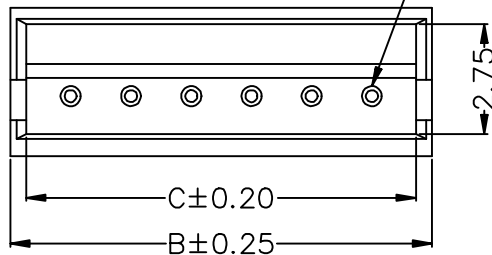
繪制日期

A

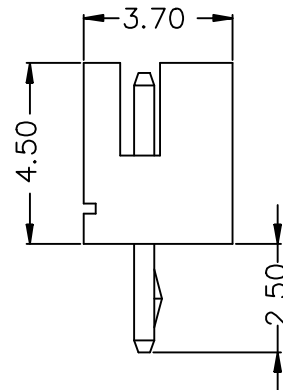
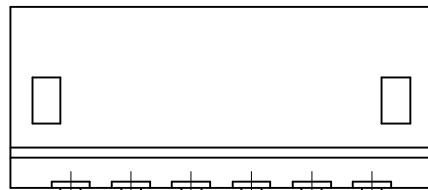
2009-3-27

A

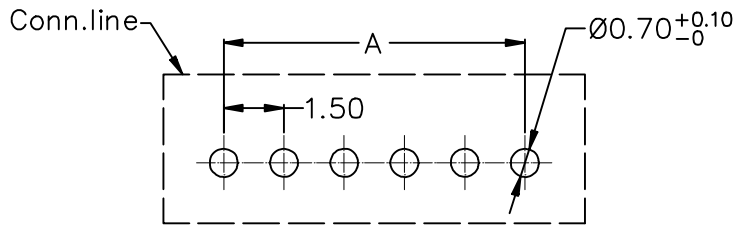
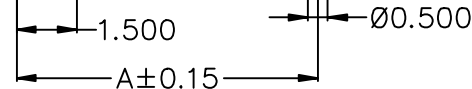
Circuit 1



B



C



Recommended P.C.B Layout
General Tolerance±0.05

D

NOTE:

- Welding Board Angle: V- Straight 180°
- Welding Way: Blank-DIP
- Row No.-Pin No.: NP-02P~15P
- Plug the Pin & Special No.: K1-Kink Slotless
- Material:NO-PA66 94V-0
- Material(Pin): Brass
- Finish(Pin): Tin-Plated

Poles	Dimensions(mm)			Poles	Dimensions(mm)		
	A	B	C		A	B	C
02	1.50	4.50	3.70	09	12.00	15.00	14.20
03	3.00	6.00	5.20	10	13.50	16.50	15.70
04	4.50	7.50	6.70	11	15.00	18.00	17.20
05	6.00	9.00	8.20	12	16.50	19.50	18.70
06	7.50	10.50	9.70	13	18.00	21.00	20.20
07	9.00	12.00	11.20	14	19.50	22.50	21.70
08	10.50	13.50	12.70	15	21.00	24.00	23.20

E

一般公差:GENERAL TOLERANCE

更改說明:REV. DESCRIPTION

更改說明:REV. DESCRIPTION

尺寸範圍DIM



10.01以上之尺寸

±0.20



10.00以內之尺寸

±0.15



孔位

±0.10

核准APPD

朱小华

2009-3-27

模型:

料號: ITEM NO

文件編號

審核CHD

MODEL

A1501WV-K1-00-NP

SC-EW-11

繪圖DWN

Liaozting

2009-3-27

比例: SCALE



SHIH CHUAN ELECTRONICS

規格: SPEC

1.5mm Crimp Style Connectors

1

2

3

4

版本REV

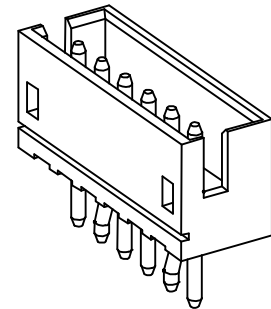
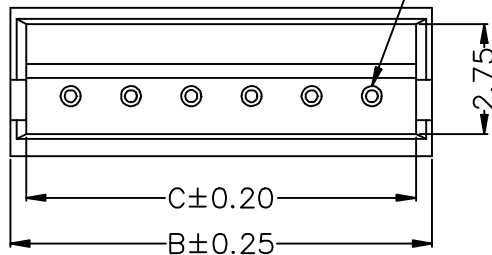
繪制日期

A

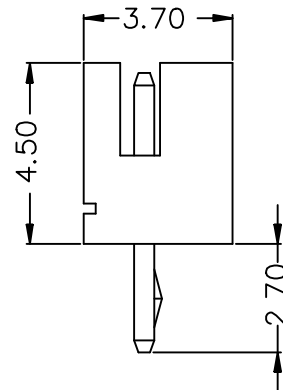
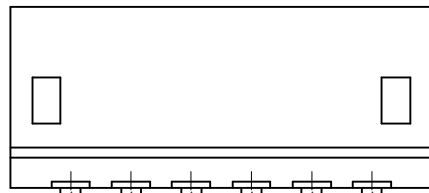
2009-3-27

A

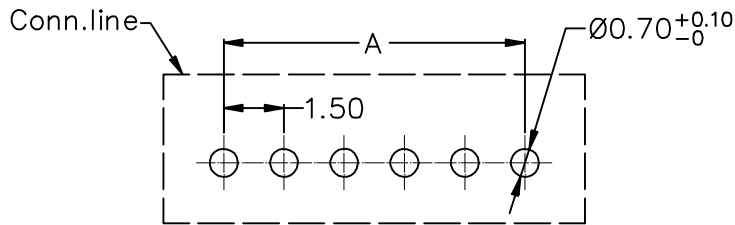
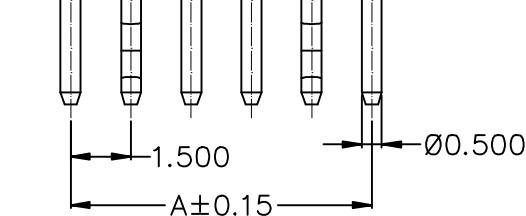
Circuit 1



B



C



Recommended P.C.B Layout
General Tolerance±0.05

D

NOTE:

- Welding Board Angle: V- Straight 180°
- Welding Way: Blank-DIP
- Row No.-Pin No.: NP-02P~15P
- Plug the Pin & Special No.: K-Kink
- Material:NO-PA66 94V-0
- Material(Pin): Brass
- Finish(Pin): Tin-Plated

Poles	Dimensions(mm)			Poles	Dimensions(mm)		
	A	B	C		A	B	C
02	1.50	4.50	3.70	09	12.00	15.00	14.20
03	3.00	6.00	5.20	10	13.50	16.50	15.70
04	4.50	7.50	6.70	11	15.00	18.00	17.20
05	6.00	9.00	8.20	12	16.50	19.50	18.70
06	7.50	10.50	9.70	13	18.00	21.00	20.20
07	9.00	12.00	11.20	14	19.50	22.50	21.70
08	10.50	13.50	12.70	15	21.00	24.00	23.20

E

一般公差:GENERAL TOLERANCE

更改說明:REV. DESCRIPTION

更改說明:REV. DESCRIPTION

尺寸範圍DIM



10.01以上之尺寸

±0.20



10.00以內之尺寸

±0.15



孔位

±0.10

核准APPD

朱小华

2009-3-27

模型:

料號: ITEM NO

文件編號

審核CHD

MODEL

A1501WV-K-00-NP

SC-EW-11

繪圖DWN

Liaozting

2009-3-27

比例: SCALE



SHIH CHUAN ELECTRONICS

規格: SPEC

1.5mm Crimp Style Connectors

1

2

3

4

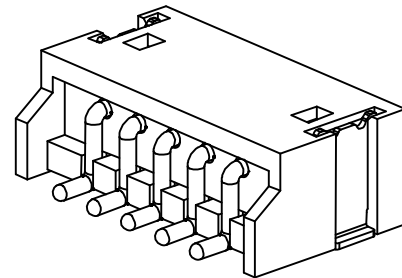
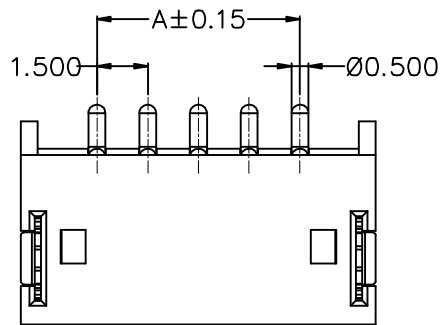
版本REV

繪制日期

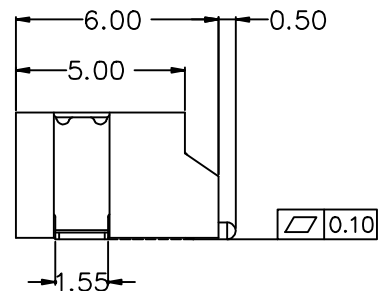
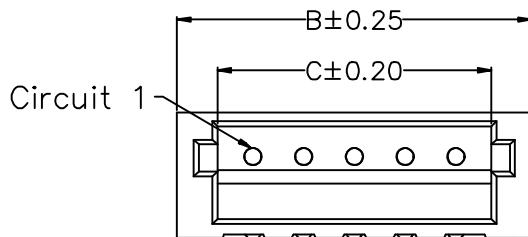
A

2009-3-27

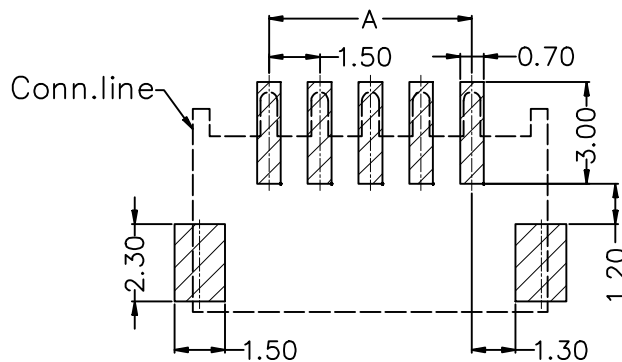
A



B



C



Recommended P.C.B Layout
General Tolerance±0.05

NOTE:

- Welding Board Angle: R- Right Angle 90°
- Welding Way: S-SMT
- Row No.-Pin No.: NP-02P~15P
- Material:6T -PA6T 94V-0 ; 9T- PA9T 94V-0
- Material(Pin): Brass
- Finish(Pin): Tin-Plated
- Material(Solder Tabs): Phosphor Bronze
- Finish(Solder Tabs): Tin-Plated

Poles	Dimensions(mm)			Poles	Dimensions(mm)		
	A	B	C		A	B	C
02	1.50	6.00	3.60	09	12.00	16.50	14.10
03	3.00	7.50	5.10	10	13.50	18.00	15.60
04	4.50	9.00	6.60	11	15.00	19.50	17.10
05	6.00	10.50	8.10	12	16.50	21.00	18.60
06	7.50	12.00	9.60	13	18.00	22.50	20.10
07	9.00	13.50	11.10	14	19.50	24.00	21.60
08	10.50	15.00	12.60	15	21.00	25.50	23.10

D

E

一般公差:GENERAL TOLERANCE

更改說明:REV. DESCRIPTION

更改說明:REV. DESCRIPTION

尺寸範圍DIM



10.01以上之尺寸

±0.20



10.00以內之尺寸

±0.15



孔位

±0.10



文件編號

核准APPD

朱小华

2009-3-27

模型:

料號: ITEM NO

SC-EW-11

審核CHD

繪圖DWN

Liaozting

2009-3-27

MODEL

A1501WRS-00-NP

比例: SCALE



SHIH CHUAN ELECTRONICS

規格: SPEC

1.5mm Crimp Style Connectors

1

2

3

4

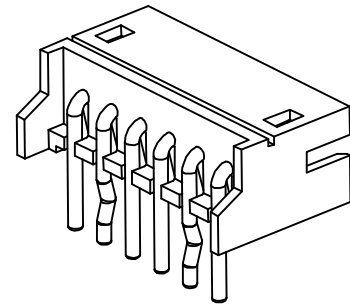
版本REV

繪制日期

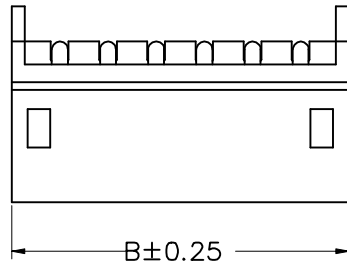
A

2009-3-27

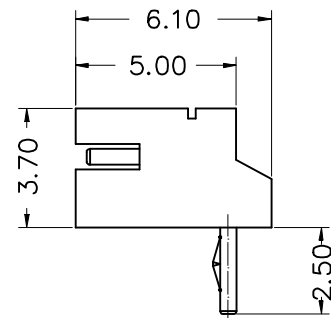
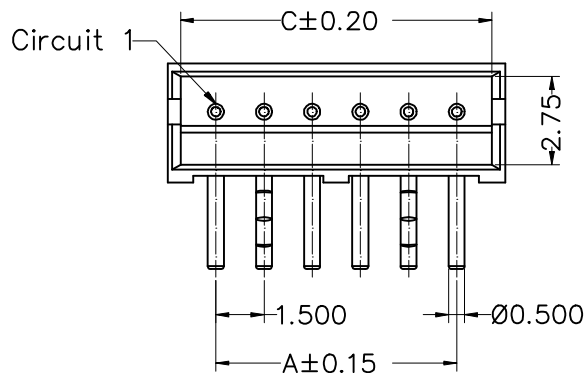
A



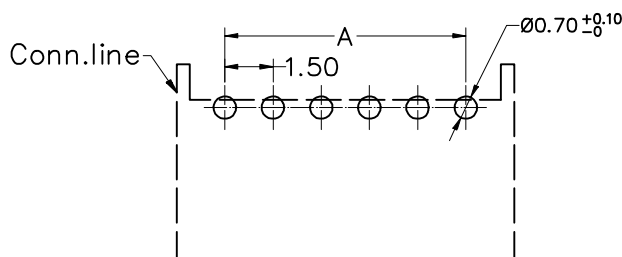
B



C



D



Recommended P.C.B Layout
General Tolerance±0.05

NOTE:

- Welding Board Angle: R- Right Angle 90°
- Welding Way: Blank-DIP
- Row No.-Pin No.: NP-02P~15P
- Plug the Pin & Special No.: K1-Kink Slotless
- Material:N0-PA66 94V-0
- Material(Pin): Brass
- Finish(Pin): Tin-Plated

Poles	Dimensions(mm)			Poles	Dimensions(mm)		
	A	B	C		A	B	C
02	1.50	4.50	3.70	09	12.00	15.00	14.20
03	3.00	6.00	5.20	10	13.50	16.50	15.70
04	4.50	7.50	6.70	11	15.00	18.00	17.20
05	6.00	9.00	8.20	12	16.50	19.50	18.70
06	7.50	10.50	9.70	13	18.00	21.00	20.20
07	9.00	12.00	11.20	14	19.50	22.50	21.70
08	10.50	13.50	12.70	15	21.00	24.00	23.20

E

一般公差: GENERAL TOLERANCE

更改說明: REV. DESCRIPTION

更改說明: REV. DESCRIPTION

尺寸範圍DIM



10.01以上之尺寸

±0.20



10.00以內之尺寸

±0.15



孔位

±0.10

核准APPD

朱小华

2009-3-27

模型:

料號: ITEM NO

文件編號

審核CHD

MODEL

A1501WR-K1-00-NP

SC-EW-11

繪圖DWN

Liaozting

2009-3-27

比例: SCALE



SHIH CHUAN ELECTRONICS

規格: SPEC

1.5mm Crimp Style Connectors

1

2

3

4

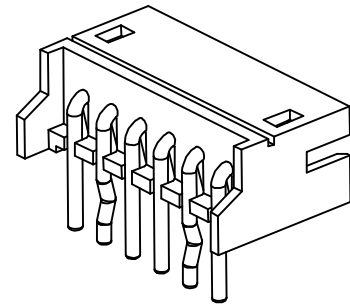
版本REV

繪制日期

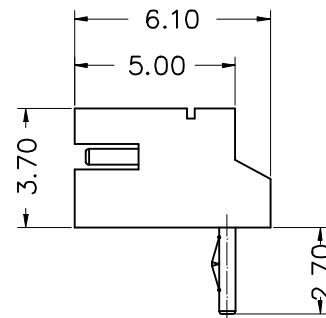
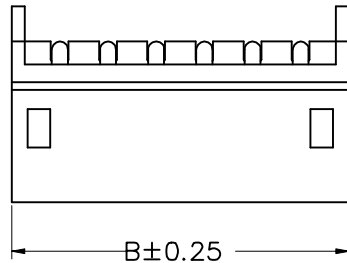
A

2009-3-27

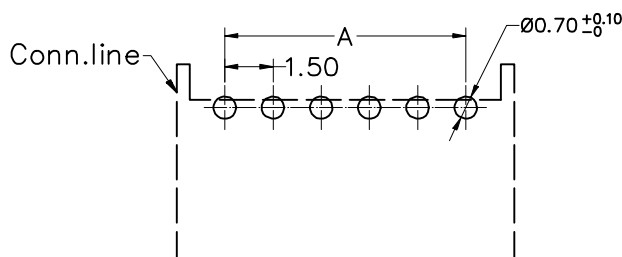
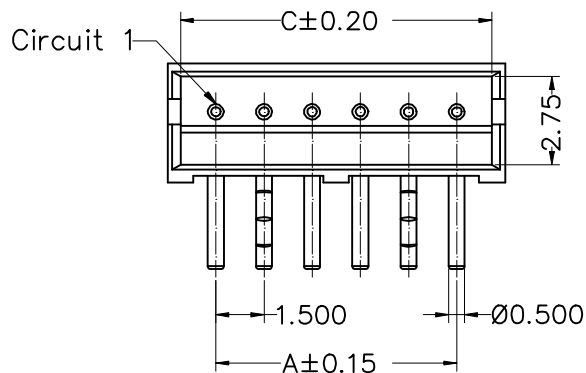
A



B



C



Recommended P.C.B Layout
General Tolerance±0.05

D

NOTE:

- Welding Board Angle: R- Right Angle 90°
- Welding Way: Blank-DIP
- Row No.-Pin No.: NP-02P~15P
- Plug the Pin & Special No.: K-Kink
- Material:NO-PA66 94V-0
- Material(Pin): Brass
- Finish(Pin): Tin-Plated

Poles	Dimensions(mm)			Poles	Dimensions(mm)		
	A	B	C		A	B	C
02	1.50	4.50	3.70	09	12.50	15.00	14.20
03	3.00	6.00	5.20	10	13.50	16.50	15.70
04	4.50	7.50	6.70	11	15.00	18.00	17.20
05	6.00	9.00	8.20	12	16.50	19.50	18.70
06	7.50	10.50	9.70	13	18.00	21.00	20.20
07	9.00	12.00	11.20	14	19.50	22.50	21.70
08	10.50	13.50	12.70	15	21.00	24.00	23.20

E

一般公差:GENERAL TOLERANCE

更改說明:REV. DESCRIPTION

更改說明:REV. DESCRIPTION

尺寸範圍DIM



10.01以上之尺寸

±0.20



10.00以內之尺寸

±0.15



孔位

±0.10

核准APPD

朱小华

2009-3-27

模型:

料號: ITEM NO

文件編號

審核CHD

MODEL

A1501WR-K-00-NP

SC-EW-11

繪圖DWN

Liaozting

2009-3-27

比例: SCALE



SHIH CHUAN ELECTRONICS

規格: SPEC

1.5mm Crimp Style Connectors

1

2

3

4

A

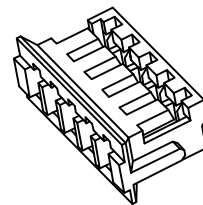
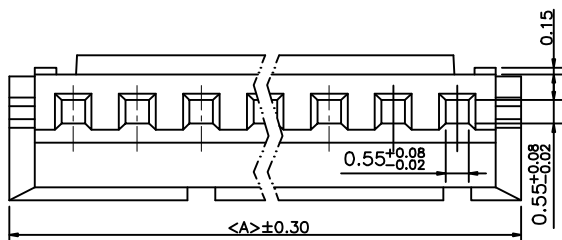
版本REV

繪制日期

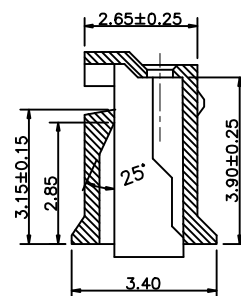
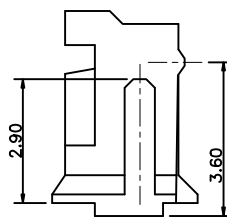
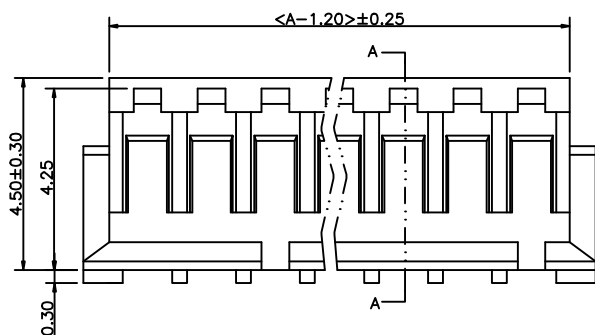
A

2009-3-27

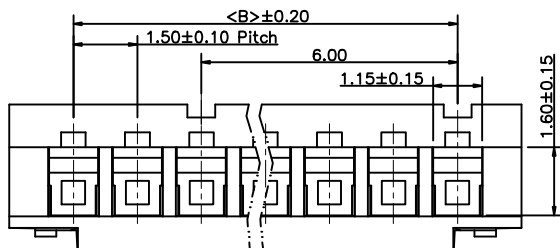
B



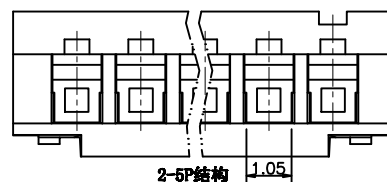
C



SECTION: (A-A)



6P以上结构



D

NOTE:

- Material: NYION 94V-0
- Q'ty: 1000PCS/Bag

Part No.	PIN	Dimension	
		A	B
A1501H00-2P	02	4.50	1.50
A1501H00-3P	03	6.00	3.00
A1501H00-4P	04	7.50	4.50
A1501H00-5P	05	9.00	6.00
A1501H00-6P	06	10.5	7.50
A1501H00-7P	07	12.00	9.00
A1501H00-8P	08	13.50	10.50
A1501H00-9P	09	15.00	12.00
A1501H00-10P	10	16.50	13.50
A1501H00-11P	11	18.00	15.00
A1501H00-12P	12	19.50	16.50
A1501H00-13P	13	21.00	18.00

E

一般公差:GENERAL TOLERANCE

更改說明:REV.DESCRPTION

更改說明:REV.DESCRPTION

尺寸範圍DIM



10.01以上之尺寸

±0.30



10.00以內之尺寸

±0.20



孔位

±0.10

核准APPD

朱小华

2009-3-27

模型:

料號: ITEM NO

文件編號

審核CHD

MODEL

A1501H-00-NP

SC-EW-11

繪圖DWN

Liaozting

2009-3-27

比例: SCALE



SHIH CHUAN ELECTRONICS

規格: SPEC

ZH1.5HSG

1

2

3

4

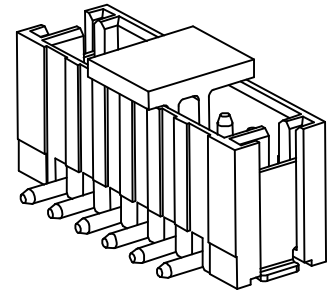
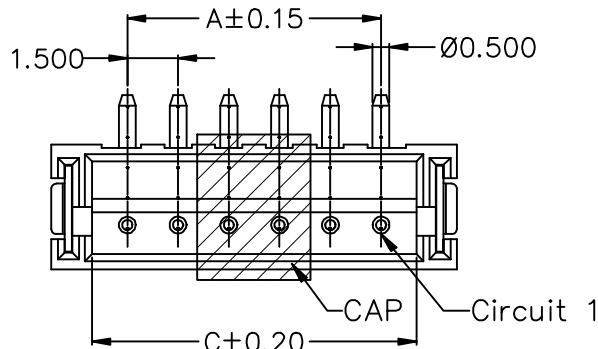
版本REV

繪制日期

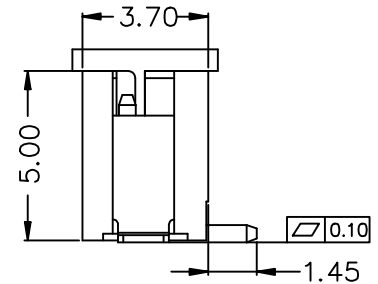
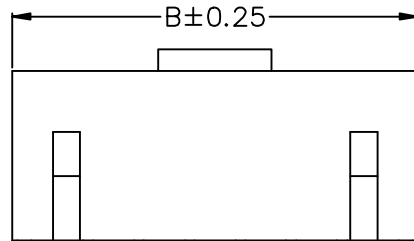
A

2009-3-27

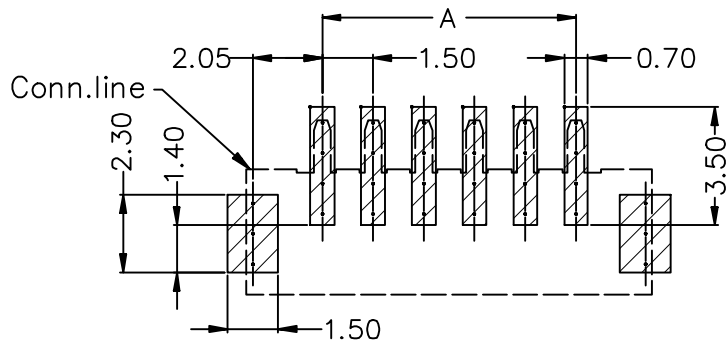
A



B



C



Recommended P.C.B Layout
General Tolerance±0.05

D

NOTE:

- Welding Board Angle: V- Right Angle 180°
- Welding Way: S-SMT
- Row No.-Pin No.: NP-02P~15P
- Material: 6T-PA6T 94V-0 ; 9T-PA9T 94V-0
- Material(Pin): Brass
- Finish(Pin): Tin-Plated
- Material(Solder Tabs): Phosphor Bronze
- Finish(Solder Tabs): Tin-Plated

Poles	Dimensions(mm)			Poles	Dimensions(mm)		
	A	B	C		A	B	C
02	1.50	6.00	3.60	09	12.00	16.50	14.10
03	3.00	7.50	5.10	10	13.50	18.00	15.60
04	4.50	9.00	6.60	11	15.00	19.50	17.10
05	6.00	10.50	8.10	12	16.50	21.00	18.60
06	7.50	12.00	9.60	13	18.00	22.50	20.10
07	9.00	13.50	11.10	14	19.50	24.00	21.60
08	10.50	15.00	12.60	15	21.00	25.50	23.10

E

一般公差: GENERAL TOLERANCE

更改說明: REV. DESCRIPTION

更改說明: REV. DESCRIPTION

尺寸範圍DIM



10.01以上之尺寸

±0.20



10.00以內之尺寸

±0.15



孔位

±0.10

核准APPD

朱小华

2009-3-27

模型:

料號: ITEM NO

文件編號

審核CHD

MODEL

A1501WVS-00-NP

SC-EW-11

繪圖DWN

Liaozting

2009-3-27

比例: SCALE



SHIH CHUAN ELECTRONICS

規格: SPEC

1.5mm Crimp Style Connectors