

1

2

3

4

版本REV

繪制日期

A

2009-3-26

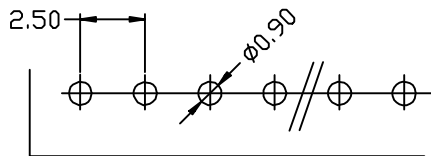
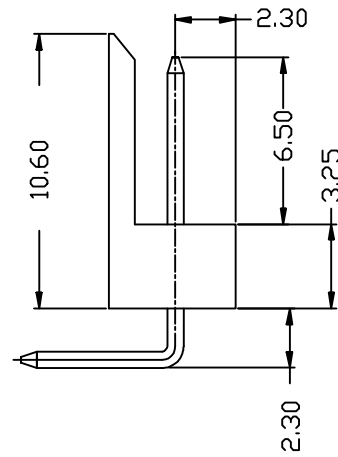
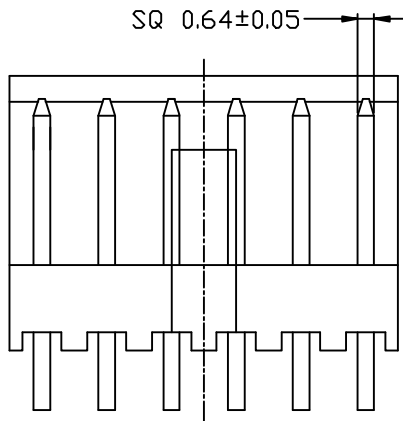
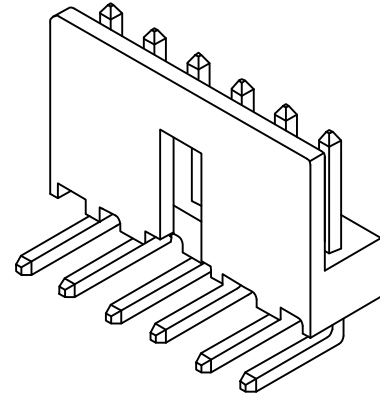
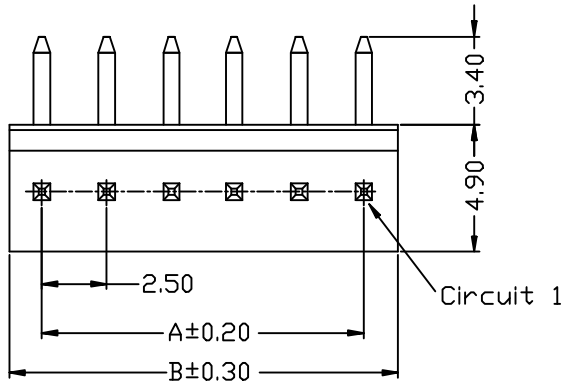
A

B

C

D

E



P.C.B Layout

NOTE:

- Welding Board Angle: R- Right Angle 90°
- Material: NYLON 66 UL 94V-0
- Material(Pin): Brass
- Finish(Pin): Tin-Plated/Gold-Plated
- Row No.-Pin No.: NP-2P~15P

Poles	Dimensions (mm)		Poles	Dimensions (mm)	
	A	B		A	B
2	2.50	5.00	9	20.00	22.50
3	5.00	7.50	10	22.50	25.00
4	7.50	10.00	11	25.00	27.50
5	10.00	12.50	12	27.50	30.00
6	12.50	15.00	13	30.00	32.50
7	15.00	17.50	14	32.50	35.00
8	17.50	20.00	15	35.00	37.50

一般公差: GENERAL TOLERANCE

更改說明: REV. DESCRIPTION

更改說明: REV. DESCRIPTION

尺寸範圍DIM



10.01以上之尺寸

±0.30



10.00以內之尺寸

±0.20



孔位

±0.10

核准APPD

朱小华

2009-3-26

模型:

料號: ITEM NO

文件編號

審核CHD

MODEL

A2542WR-00-NP

SC-EW-11

繪圖DWN

Liaozting

2009-3-26

比例: SCALE

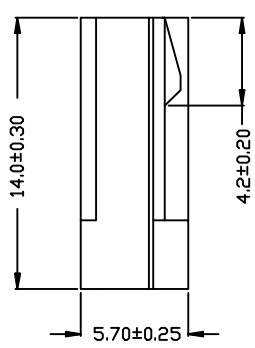
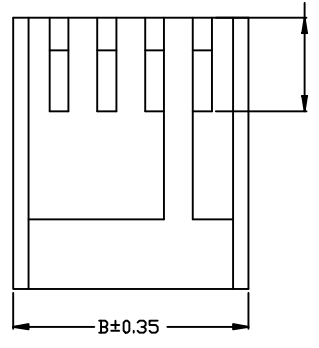
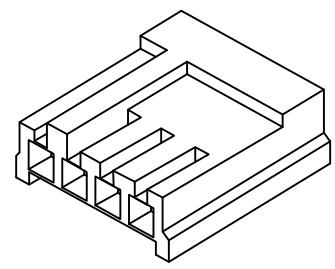
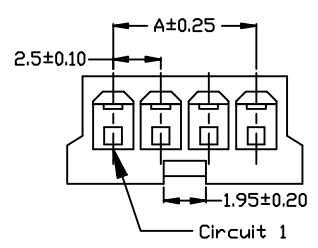


SHIH CHUAN ELECTRONICS

規格: SPEC

2.50mm Crisp Style Connectors

版本REV	繪制日期
A	2009-3-28



Poles	Dimensions (mm)	
	A	B
2	2.50	7.20
3	5.00	9.70
4	7.50	12.20
5	10.00	14.70
6	12.50	17.20
7	15.00	19.70
8	17.50	22.20
9	20.00	24.70
10	22.50	27.20
11	25.00	29.70
12	27.50	32.20

NOTE:  
 •Material: NYION PA66 UL 94V-0

一般公差:GENERAL TOLERANCE		更改說明:REV.DESCRPTION			更改說明:REV.DESCRPTION	
尺寸範圍DIM		△			△	
10.01以上之尺寸	±0.30	△			△	
10.00以內之尺寸	±0.20	△			△	
孔位	±0.10	核准APPD	朱小华	2009-3-28	模型: MODEL	料號: ITEM NO
文件編號		審核CHD			A2542H00-NP	
SC-EW-11		繪圖DWN	Liaozting	2009-3-28		
比例: SCALE					規格: SPEC	
					2.50 mm Crimp Style Connector	

1

2

3

4

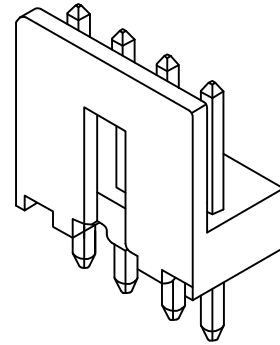
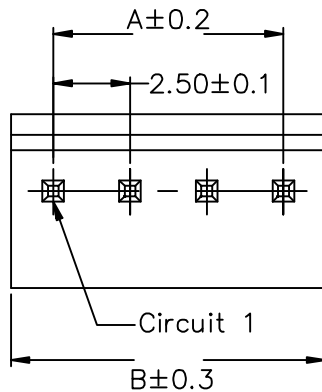
版本REV

繪制日期

A

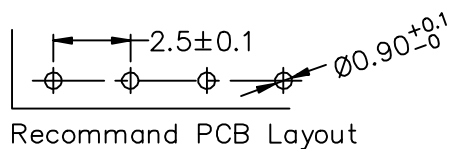
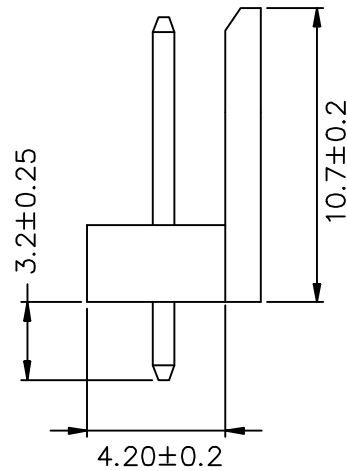
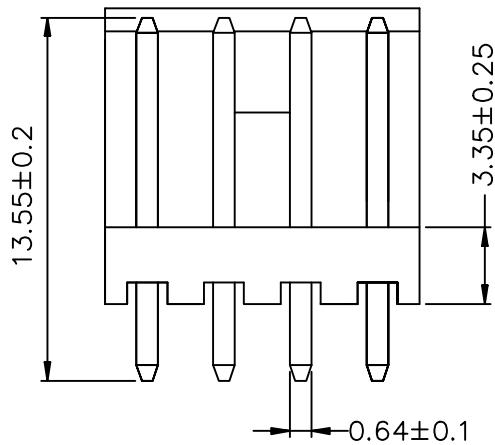
2009-3-26

A



B

C



Recommand PCB Layout

D

NOTE:

- Welding Board Angle: V- Stight 180°
- Material: NYLON 66 UL 94V-0
- Material(Pin): Brass
- Finish(Pin): Tin-Plated
- Row No.-Pin No.: NP-2P~15P

Poles	Dimensions (mm)		Poles	Dimensions (mm)	
	A	B		A	B
2	2.50	5.00	9	20.00	22.50
3	5.00	7.50	10	22.50	25.00
4	7.50	10.00	11	25.00	27.50
5	10.00	12.50	12	27.50	30.00
6	12.50	15.00	13	30.00	32.50
7	15.00	17.50	14	32.50	35.00
8	17.50	20.00	15	35.00	37.50

E

一般公差: GENERAL TOLERANCE

更改說明: REV. DESCRIPTION

更改說明: REV. DESCRIPTION

尺寸範圍DIM



10.01以上之尺寸

±0.30



10.00以內之尺寸

±0.20



孔位

±0.10

核准APPD

朱小华

2009-3-26

模型:

料號: ITEM NO

文件編號

審核CHD

MODEL

A2542WV-00-NP

SC-EW-11

繪圖DWN

Liaozting

2009-3-26

比例: SCALE



SHIH CHUAN ELECTRONICS

規格: SPEC

2.5mm Crimp Style Connectors