

1

2

3

4

版本REV

繪制日期

A

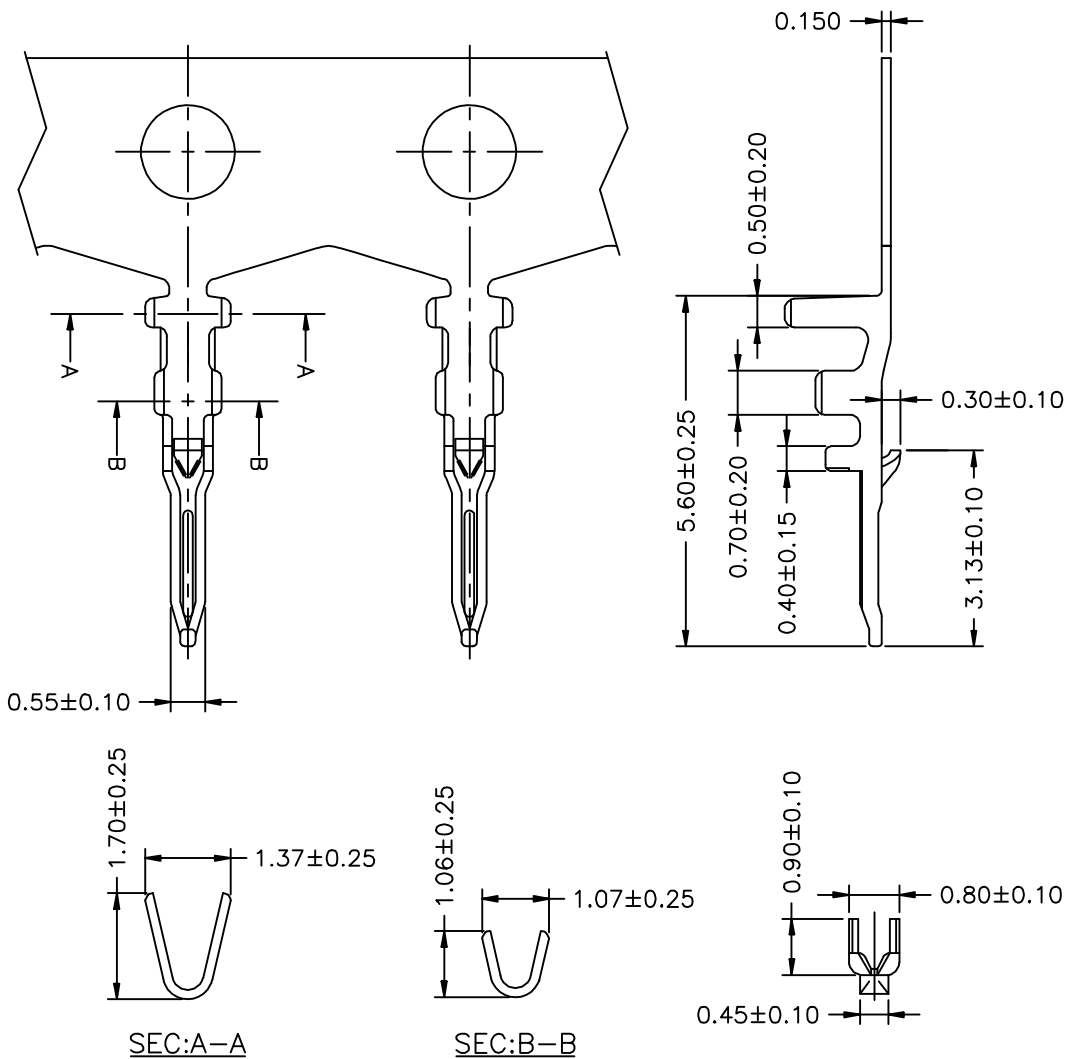
2009-2-18

A

B

C

D



NOTE:

- 1.THICKNESS: 0.15mm
- 2.MATERIAL: Phosphor Bronze
- 3.FINISH: TIN PIATED
- 4.APPLICABLE WIRE:AWG28-32
- 5.使用量具為電子卡尺

一般公差:GENERAL TOLERANCE

更改說明:REV.DESCRPTION

更改說明:REV.DESCRPTION

尺寸範圍DIM

①

④

.0

±0.30

②

⑤

.00

±0.20

③

⑥

.000

±0.10

核准APPD

朱小华

2009-2-18

模型:

料號: ITEM NO

文件編號

審核CHD

Tony

2009-2-18

MODEL

B1259TOP-V-2

SC-A-2500T

繪圖DWN

Liaozting

2009-2-18

比例: SCALE



SHIH CHUAN ELECTRONICS

規格: SPEC

1.25mm Crimp Style Connector

1

2

3

4

版本REV

繪制日期

A

2009-3-28

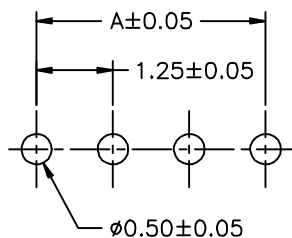
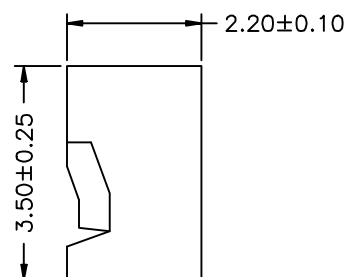
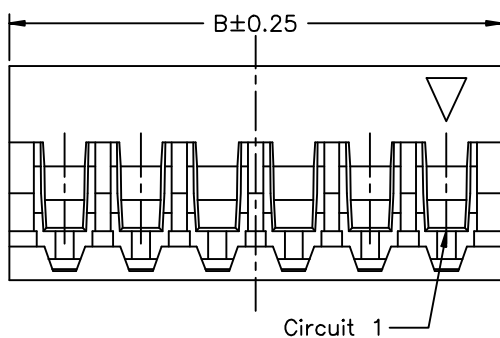
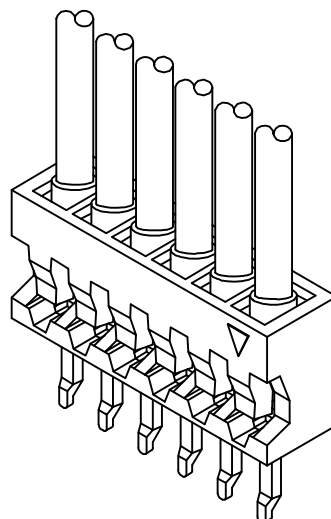
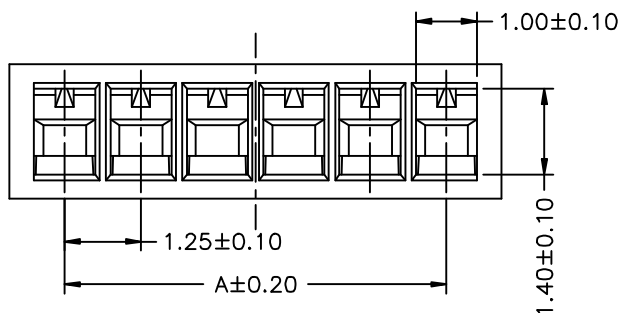
A

B

C

D

E



SUGGESTED PCB LAYOUT  
(COMPONENT SIDE)

Circuit No.	Dimensions	
	A	B
02P	1.25	3.05
03P	2.50	4.30
04P	3.75	5.55
05P	5.00	6.80
06P	6.25	8.05
07P	7.50	9.30
08P	8.75	10.55
09P	10.00	11.80
10P	11.25	13.05
11P	12.50	14.30
12P	13.75	15.55
13P	15.00	16.80
14P	16.25	18.05
15P	17.50	19.30

NOTE:

- Connector Type: V-Stright 180°
- Material: PA66 UL94V-0
- Row No.-Pin No.: NP-02P-15P

一般公差: GENERAL TOLERANCE

更改說明: REV. DESCRIPTION

更改說明: REV. DESCRIPTION

尺寸範圍DIM

①

④

10.01以上之尺寸

±0.20

②

⑤

10.00以內之尺寸

±0.15

③

⑥

孔位

±0.10

核准APPD

朱小华

2009-3-28

模型:

料號: ITEM NO

文件編號

審核CHD

Tony

2009-3-28

MODEL

B1259H00-V-NP

SC-EW-11

繪圖DWN

Liaozting

2009-3-28

比例: SCALE



SHIH CHUAN ELECTRONICS

規格: SPEC

1.25mm Crimp Style Connectors