

1

2

3

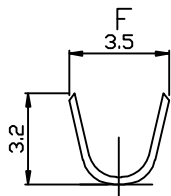
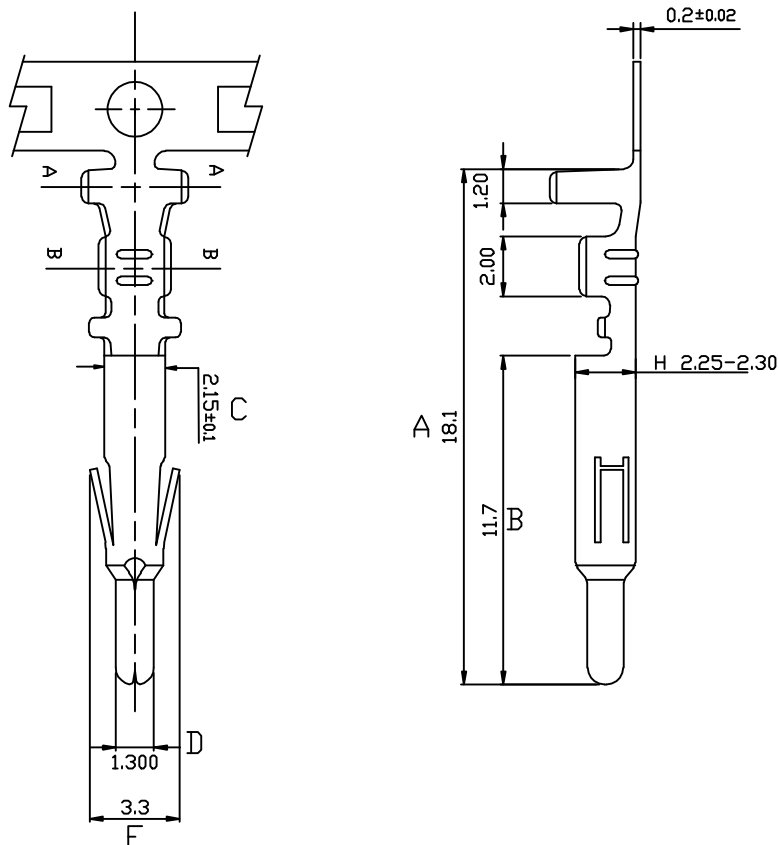
4

版本REV

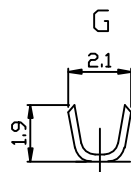
繪制日期

A

2009-2-18



Section A-A



Section B-B

NOTE:

- 1.THICKNESS: 0.20mm
- 2.MATERIAL: BRASS
- 3.FINISH: TIN PLATED
- 4.APPLICABLE WIRE:AWG20-24
- 5.使用量具為電子卡尺

一般公差:GENERAL TOLERANCE

更改說明:REV.DESCRPTION

更改說明:REV.DESCRPTION

尺寸範圍DIM



.0

±0.30



.00

±0.20



.000

±0.10

核准APPD

朱小华

2009-2-18

模型:

料號: ITEM NO

文件編號

審核CHD

MODEL

C4501T-BS 公端

SC-A-2001T

繪圖DWN

Liaozting

2009-2-18

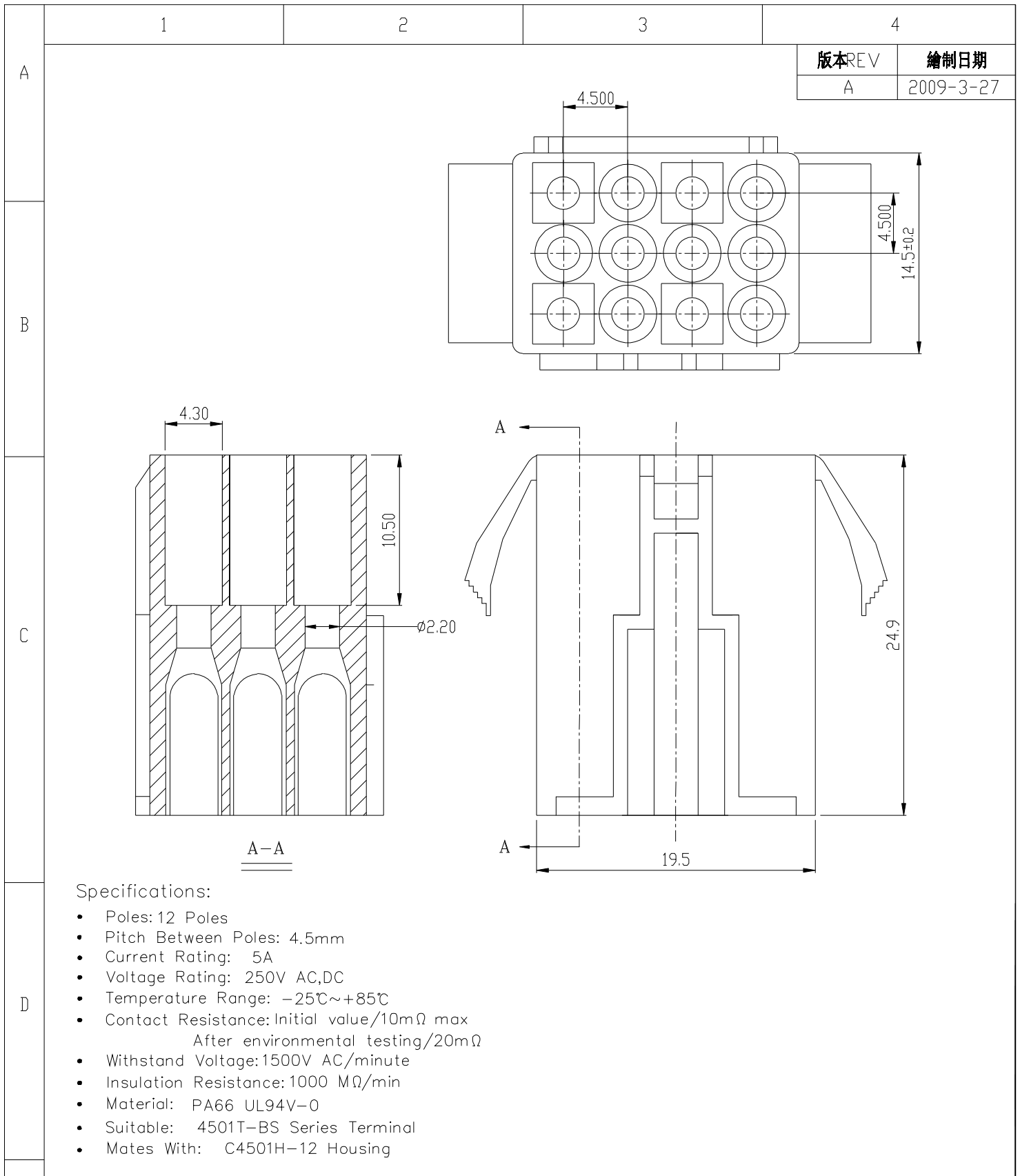
比例: SCALE



东莞世权电子有限公司  
SHIH CHUAN ELECTRONICS

規格: SPEC

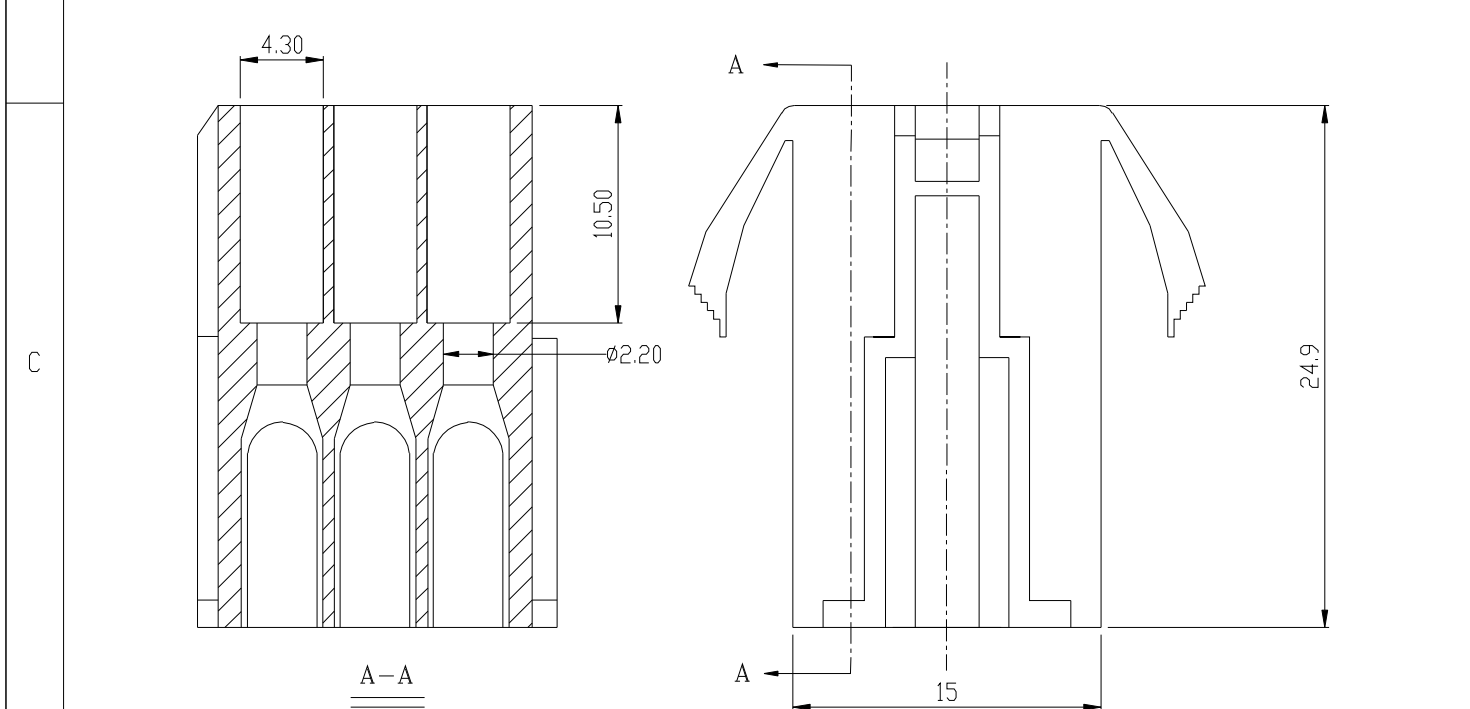
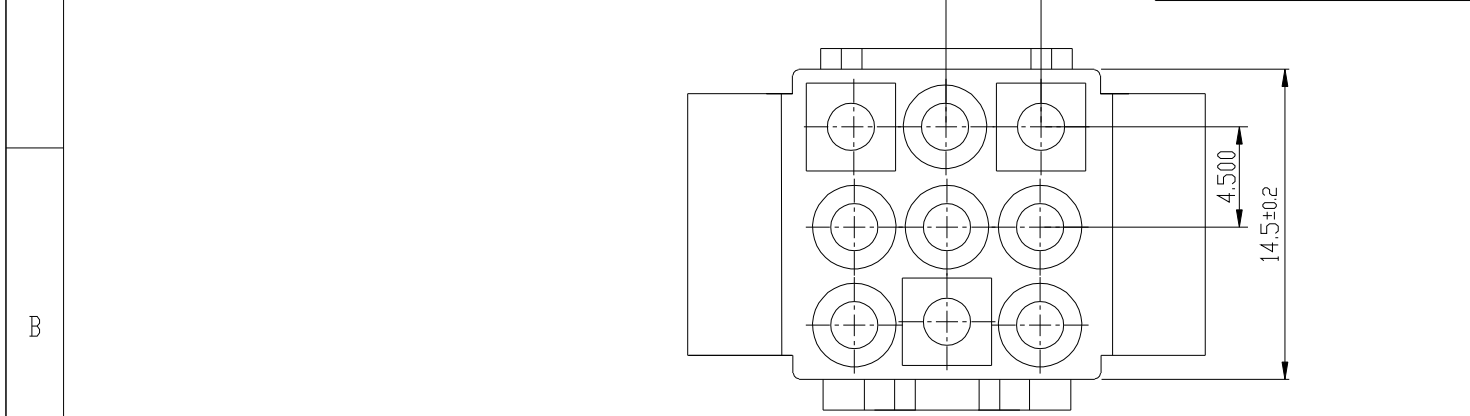
1011T-BS 公端



	一般公差:GENERAL TOLERANCE	更改說明:REV.DESCRPTION	更改說明:REV.DESCRPTION
	尺寸範圍DIM	①	④
	10.01以上之尺寸	±0.30	②
	10.00以內之尺寸	±0.20	③
	孔位	±0.10	⑥
E	文件編號	核准APPD	朱小华
	SC-EW-11	審核CHD	
		繪圖DWN	Liaozting
			2009-3-27
	比例: SCALE	<b>东莞世权电子有限公司</b> SHIH CHUAN ELECTRONICS	
		模型: MODEL	料號: ITEM NO C4502H-12
		規格: SPEC	1.3空接3X4PIN母壳


	1	2	3	4
--	---	---	---	---

A	版本REV	繪制日期
	A	2009-3-27



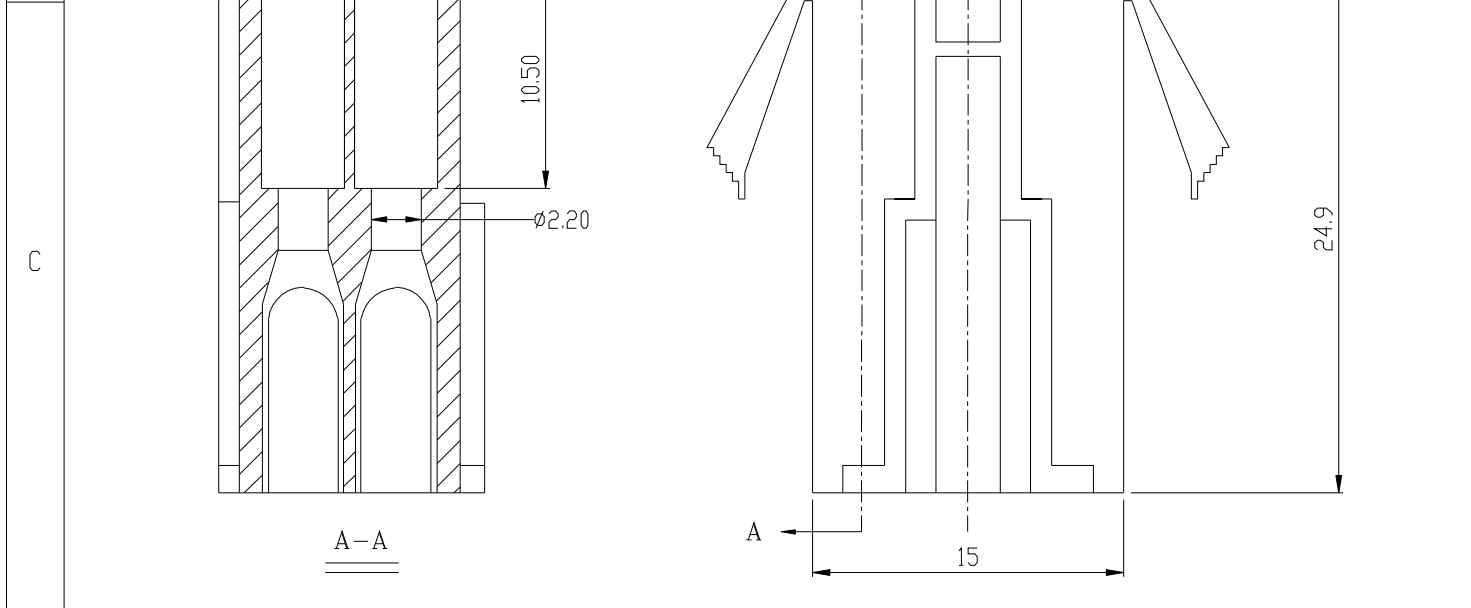
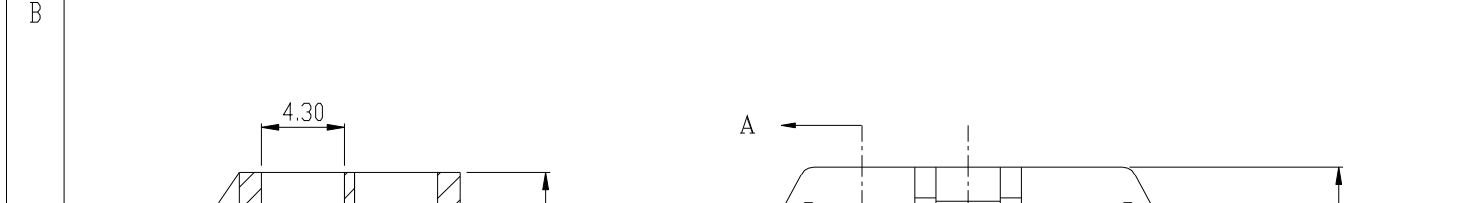
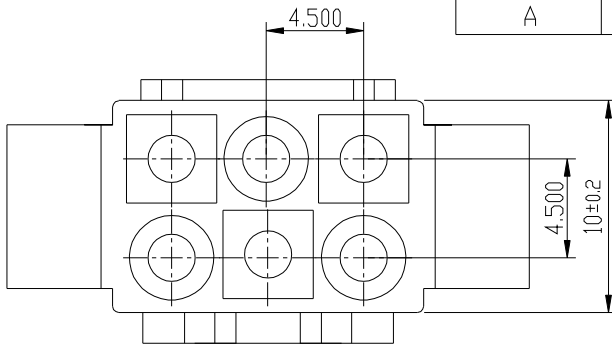
Specifications:

- Poles: 9 Poles
- Pitch Between Poles: 4.5mm
- Current Rating: 5A
- Voltage Rating: 250V AC,DC
- Temperature Range: -25°C~+85°C
- Contact Resistance: Initial value/10mΩ max  
After environmental testing/20mΩ
- Withstand Voltage: 1500V AC/minute
- Insulation Resistance: 1000 MΩ/min
- Material: PA66 UL94V-0
- Suitable: 4501T-BS Series Terminal
- Mates With: C4501H-09 Housing

一般公差:GENERAL TOLERANCE		更改說明:REV.DESCRPTION			更改說明:REV.DESCRPTION	
尺寸範圍DIM		①			④	
10.01以上之尺寸	±0.30	②			⑤	
10.00以內之尺寸	±0.20	③			⑥	
孔位	±0.10	核准APPD	朱小华	2009-3-27	模型:	料號: ITEM NO
文件編號	SC-EW-11	審核CHD			MODEL	C4502H-09
比例: SCALE	 <b>东莞世权电子有限公司</b> SHIH CHUAN ELECTRONICS			規格: SPEC 1.3空接3X3PIN母壳		


	1	2	3	4
--	---	---	---	---

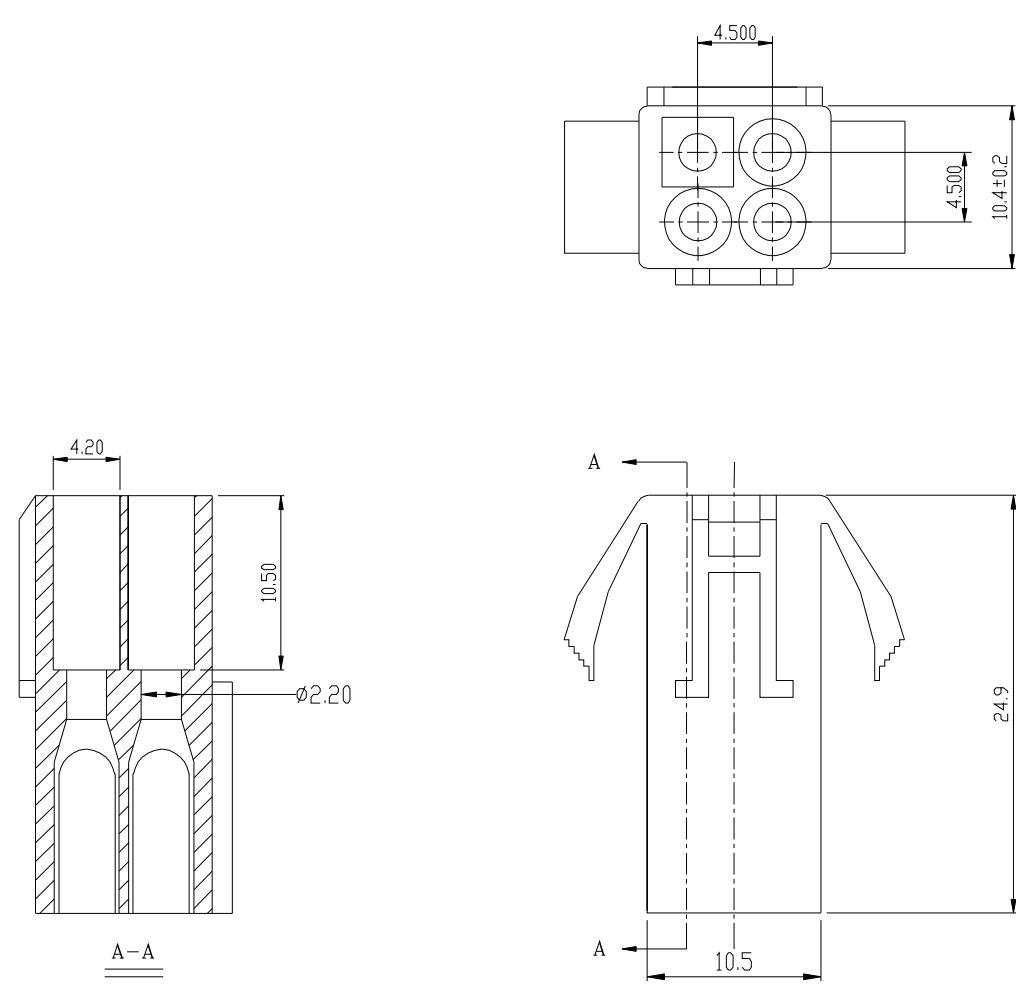
A	版本REV			繪制日期
	A			2009-3-27




Specifications:

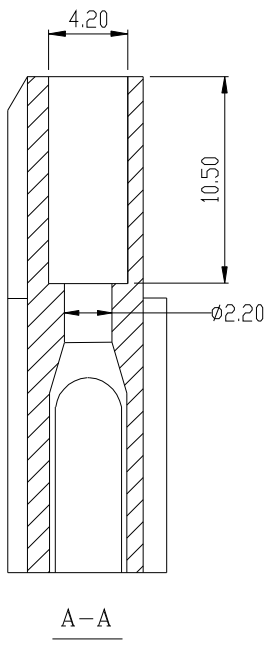
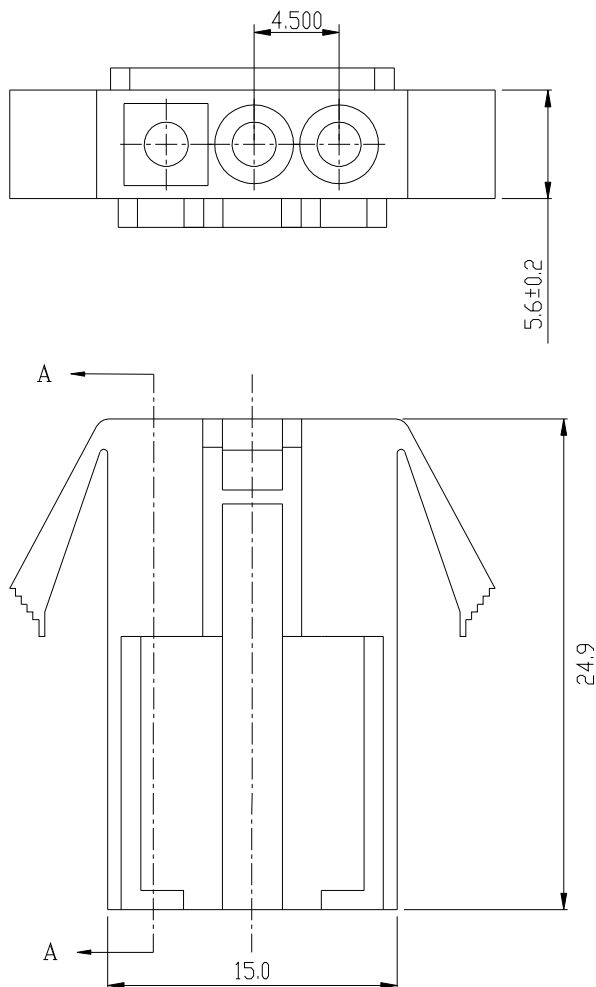
- Poles: 6 Poles
- Pitch Between Poles: 4.5mm
- Current Rating: 5A
- Voltage Rating: 250V AC,DC
- Temperature Range: -25°C~+85°C
- Contact Resistance: Initial value/10mΩ max  
After environmental testing/20mΩ
- Withstand Voltage: 1500V AC/minute
- Insulation Resistance: 1000 MΩ/min
- Material: PA66 UL94V-0
- Suitable: 4501T-BS Series Terminal
- Mates With: C4501H-06 Housing

一般公差: GENERAL TOLERANCE		更改說明: REV. DESCRIPTION			更改說明: REV. DESCRIPTION	
尺寸範圍 DIM		①			④	
10.01以上之尺寸	±0.30	②			⑤	
10.00以內之尺寸	±0.20	③			⑥	
孔位	±0.10	核准 APPD	朱小华	2009-3-27	模型: MODEL	料號: ITEM NO
文件編號		審核 CHD			C4502H-06	
SC-EW-11		繪圖 DWN	Liaozting	2009-3-27		
比例: SCALE	 <b>东莞世权电子有限公司</b> SHIH CHUAN ELECTRONICS			規格: SPEC 1.3空接2X3PIN 母壳		

A	1	2	3	4				
B	<table border="1" style="float: right; margin-right: 20px;"> <tr> <td>版本REV</td> <td>繪制日期</td> </tr> <tr> <td>A</td> <td>2009-3-27</td> </tr> </table>				版本REV	繪制日期	A	2009-3-27
版本REV	繪制日期							
A	2009-3-27							
C								
D	<p>Specifications:</p> <ul style="list-style-type: none"> <li>• Poles: 4 Poles</li> <li>• Pitch Between Poles: 4.5mm</li> <li>• Current Rating: 5A</li> <li>• Voltage Rating: 250V AC,DC</li> <li>• Temperature Range: -25°C~+85°C</li> <li>• Contact Resistance: Initial value/10mΩ max After environmental testing/20mΩ</li> <li>• Withstand Voltage: 1500V AC/minute</li> <li>• Insulation Resistance: 1000 MΩ/min</li> <li>• Material: PA66 UL94V-0</li> <li>• Suitable: 4501T-BS Series Terminal</li> <li>• Mates With: C4501H-04 Housing</li> </ul>							


E	一般公差:GENERAL TOLERANCE		更改說明:REV.DESCRPTION			更改說明:REV.DESCRPTION	
	尺寸範圍DIM		①			④	
	10.01以上之尺寸	±0.30	②			⑤	
	10.00以內之尺寸	±0.20	③			⑥	
	孔位	±0.10	核准APPD	朱小华	2009-3-27	模型: MODEL	料號: ITEM NO
	文件編號 SC-EW-11		審核CHD			C4502H-04	
比例: SCALE			<b>东莞世权电子有限公司</b> SHIH CHUAN ELECTRONICS			規格: SPEC 1.3空接2X2PIN 母壳	

A	1	2	3	4
				版本REV A



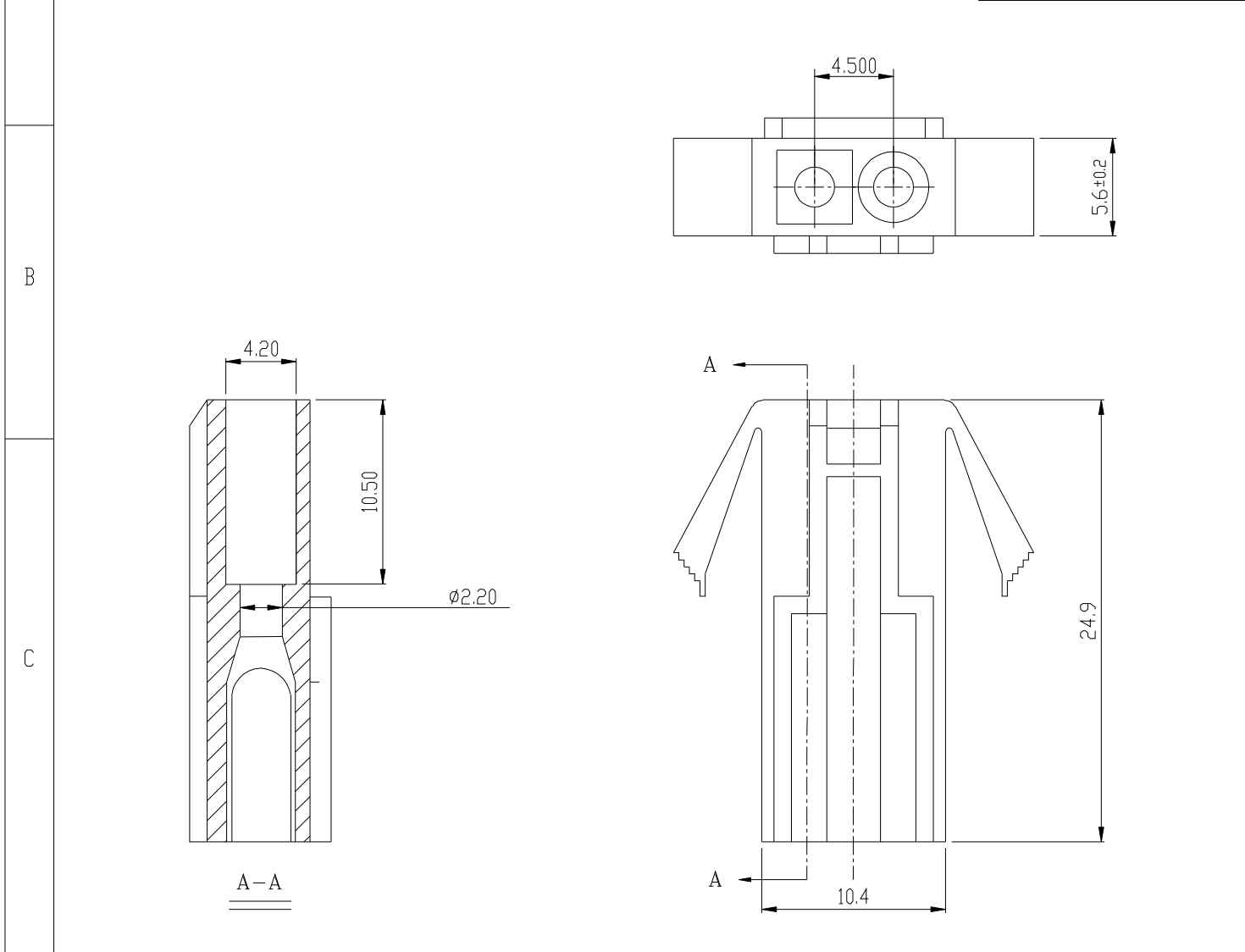
Specifications:

- Poles: 3 Poles
- Pitch Between Poles: 4.5mm
- Current Rating: 5A
- Voltage Rating: 250V AC,DC
- Temperature Range: -25°C~+85°C
- Contact Resistance: Initial value/10mΩ max  
After environmental testing/20mΩ
- Withstand Voltage: 1500V AC/minute
- Insulation Resistance: 1000 MΩ/min
- Material: PA66 UL94V-0 / PA6 UEB GF+30%
- Suitable: 4501T-BS Series Terminal
- Mates With: C4501H-03 Housing

E	一般公差:GENERAL TOLERANCE		更改說明:REV.DESCRPTION			更改說明:REV.DESCRPTION	
	尺寸範圍DIM		①			④	
	10.01以上之尺寸	±0.30	②			⑤	
	10.00以內之尺寸	±0.20	③			⑥	
	孔位	±0.10	核准APPD	朱小华	2009-3-27	模型: MODEL	料號: ITEM NO C4502H-03
	文件編號 SC-EW-11		審核CHD				
比例: SCALE		繪圖DWN	Liaozting	2009-3-27	規格: SPEC 1.3空接1X3PIN 母壳		
		 <b>东莞世权电子有限公司</b> SHIH CHUAN ELECTRONICS					


	1	2	3	4
--	---	---	---	---

A				版本REV	繪制日期
				A	2009-3-27



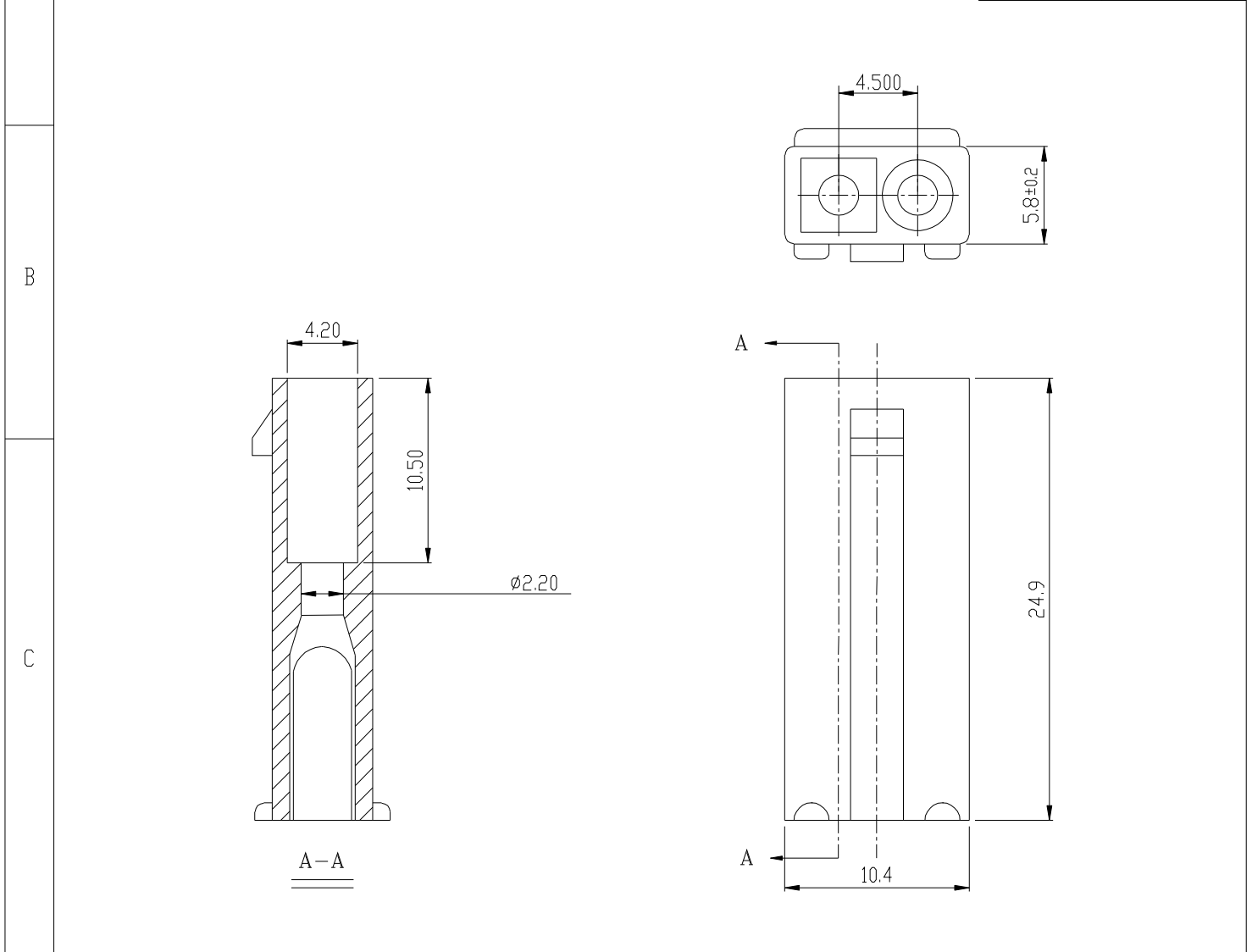
Specifications:

- Poles: 2 Poles
- Pitch Between Poles: 4.5mm
- Current Rating: 5A
- Voltage Rating: 250V AC,DC
- Temperature Range: -25°C~+85°C
- Contact Resistance: Initial value/10mΩ max  
After environmental testing/20mΩ
- Withstand Voltage: 1500V AC/minute
- Insulation Resistance: 1000 MΩ/min
- Material: PA66 UL 94V-0
- Suitable: 4501T-BS Series Terminal
- Mates With: C4501H-02 Housing

一般公差: GENERAL TOLERANCE		更改說明: REV. DESCRIPTION			更改說明: REV. DESCRIPTION	
尺寸範圍 DIM		①			④	
10.01 以上之尺寸	±0.30	②			⑤	
10.00 以內之尺寸	±0.20	③			⑥	
孔位	±0.10	核准 APPD	朱小华	2009-3-27	模型: MODEL	料號: ITEM NO
文件編號		審核 CHD			C4502H-02	
SC-EW-11		繪圖 DWN	Liaozting	2009-3-27		
比例: SCALE	 <b>东莞世权电子有限公司</b> SHIH CHUAN ELECTRONICS			規格: SPEC 1.3 空接 1X2PIN 母壳		


	1	2	3	4
--	---	---	---	---

A				版本REV	繪制日期
				A	2009-3-27



Specifications:

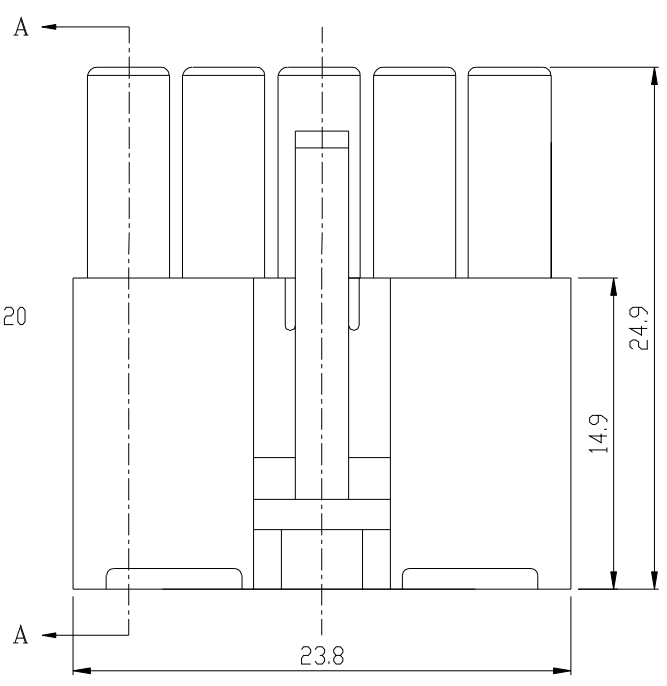
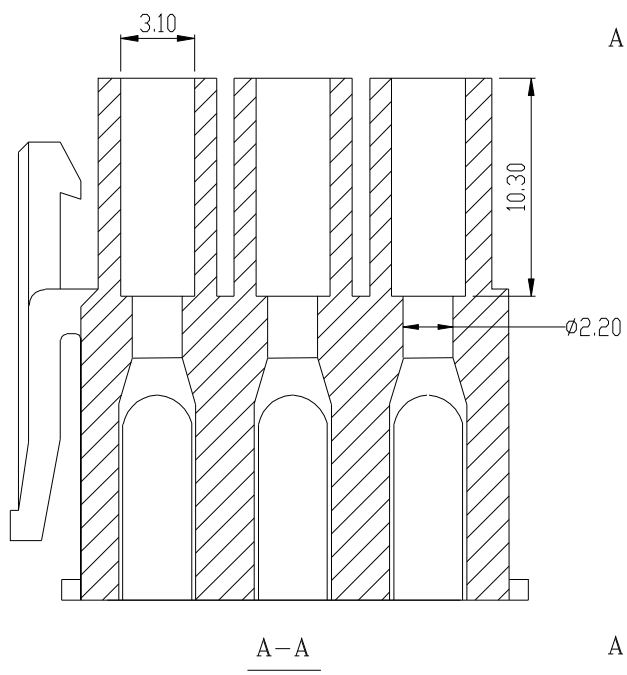
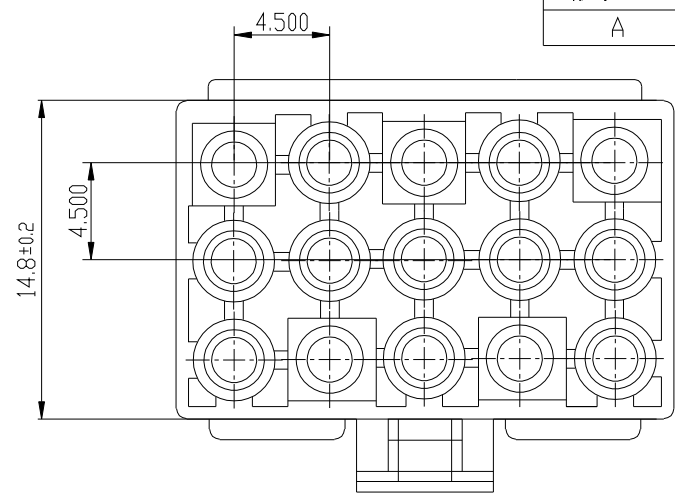
- Poles: 2 Poles
- Pitch Between Poles: 4.5mm
- Current Rating: 5A
- Voltage Rating: 250V AC,DC
- Temperature Range: -25°C~+85°C
- Contact Resistance: Initial value/10mΩ max  
After environmental testing/20mΩ
- Withstand Voltage: 1500V AC/minute
- Insulation Resistance: 1000 MΩ/min
- Material: PA66 UL 94V-0
- Suitable: 4501T-BS Series Terminal
- Mates With: C4501H-02 Housing

E	一般公差: GENERAL TOLERANCE		更改說明: REV. DESCRIPTION			更改說明: REV. DESCRIPTION	
	尺寸範圍 DIM		①			④	
	10.01以上之尺寸	±0.30	②			⑤	
	10.00以內之尺寸	±0.20	③			⑥	
	孔位	±0.10	核准 APPJ	朱小华	2009-3-27	模型: MODEL	料號: ITEM NO
	文件編號	SC-EW-11	審核 CHD			C4502H-02	
比例: SCALE	 东莞世权电子有限公司 SHIH CHUAN ELECTRONICS			規格: SPEC 1.3空接 1X2PIN 母壳无扣			




	1	2	3	4
--	---	---	---	---

版本REV	繪制日期
A	2009-3-27

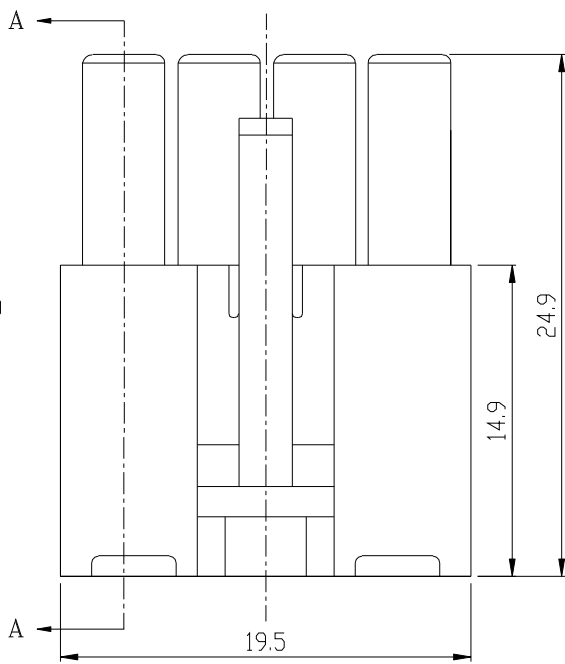
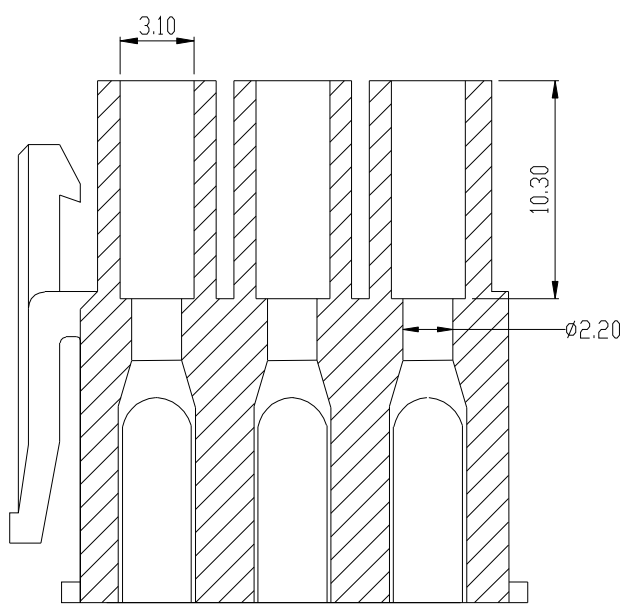
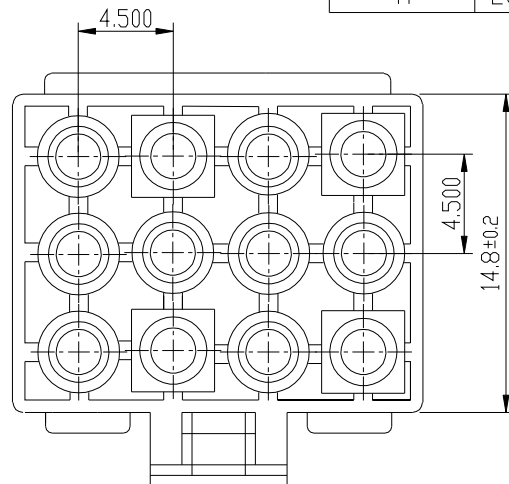


Specifications:

- Poles: 15 Poles
- Pitch Between Poles: 4.5mm
- Current Rating: 5A
- Voltage Rating: 250V AC,DC
- Temperature Range: -25°C~+85°C
- Contact Resistance: Initial value/10mΩ max  
After environmental testing/20mΩ
- Withstand Voltage: 1500V AC/minute
- Insulation Resistance: 1000 MΩ/min
- Material: PA66 UL 94V-0
- Suitable: 4502T-BS Series Terminal
- Mates With: C4502H-15 Housing


一般公差: GENERAL TOLERANCE		更改說明: REV. DESCRIPTION			更改說明: REV. DESCRIPTION	
尺寸範圍 DIM		①			④	
10.01以上之尺寸	±0.30	②			⑤	
10.00以內之尺寸	±0.20	③			⑥	
孔位	±0.10	核准 APPJ	朱小华	2009-3-27	模型: MODEL	料號: ITEM NO
文件編號	SC-EW-11	審核 CHD			C4501H-15	
		繪圖 DWN	Liaozting	2009-3-27		
比例: SCALE	 <b>东莞世权电子有限公司</b> SHIH CHUAN ELECTRONICS			規格: SPEC 1.3空接 3X5PIN 公壳		

A	1	2	3	4
				版本REV A



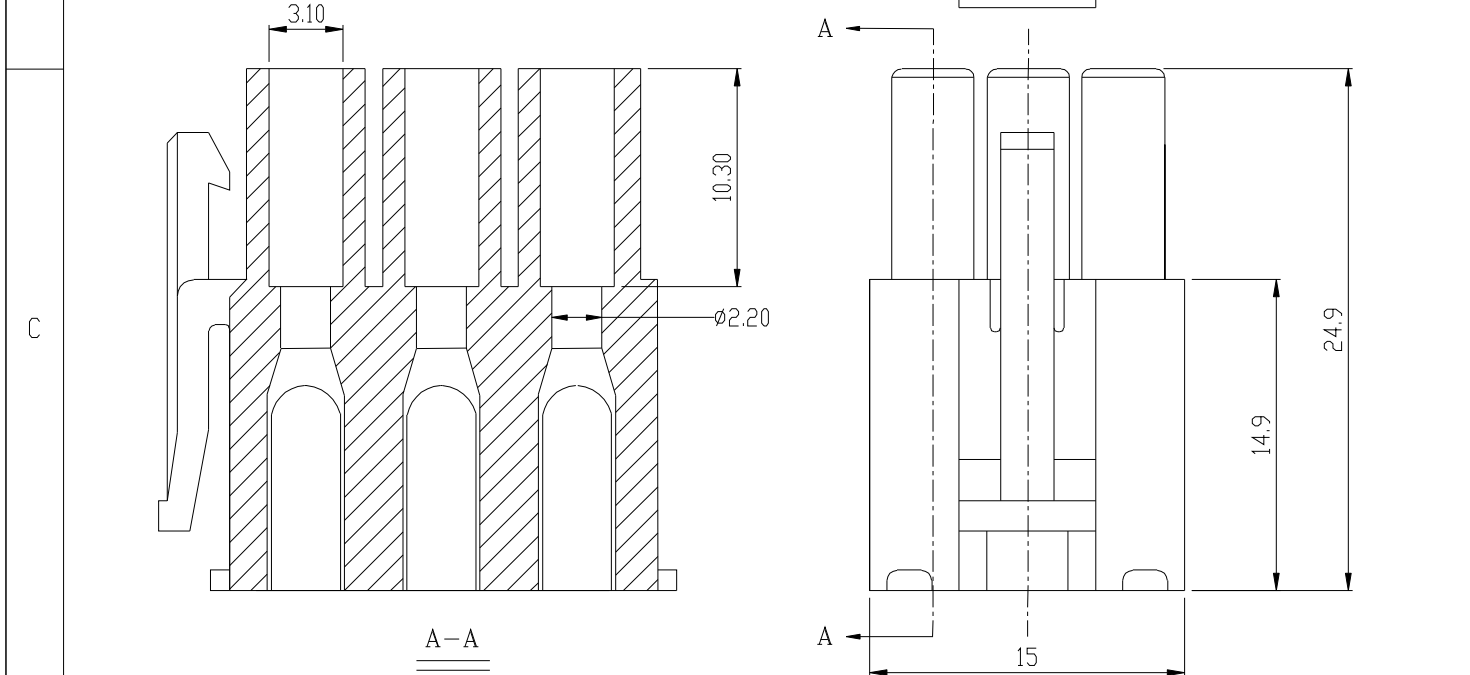
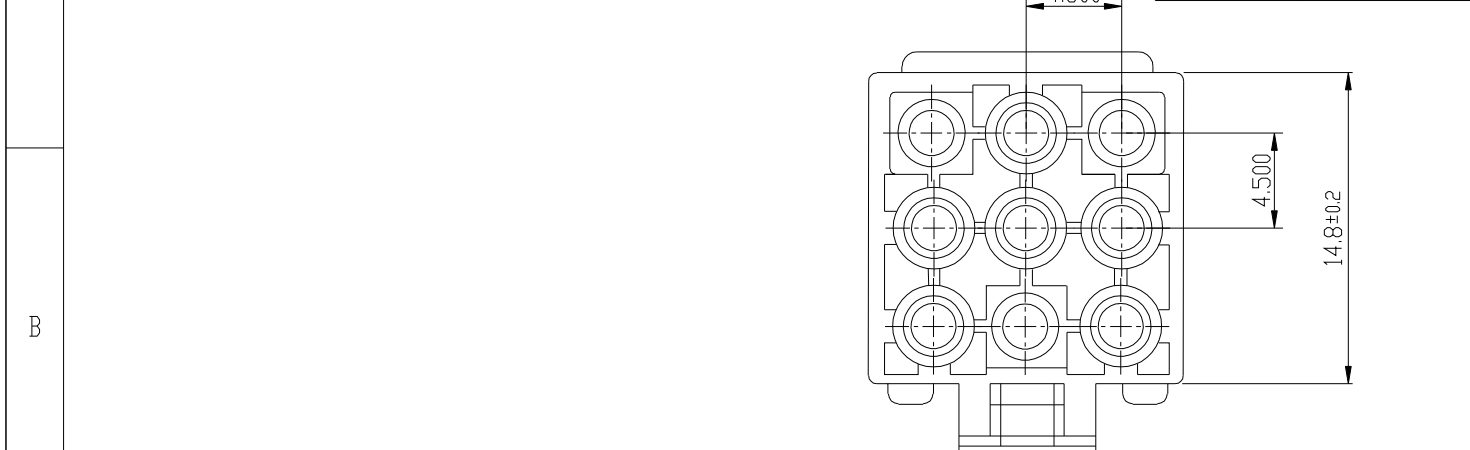
Specifications:

- Poles: 12 Poles
- Pitch Between Poles: 4.5mm
- Current Rating: 5A
- Voltage Rating: 250V AC,DC
- Temperature Range: -25°C~+85°C
- Contact Resistance: Initial value/10mΩ max  
After environmental testing/20mΩ
- Withstand Voltage: 1500V AC/minute
- Insulation Resistance: 1000 MΩ/min
- Material: PA66 UL 94V-0
- Suitable: 4502T-BS Series Terminal
- Mates With: C4502H-12 Housing

E	一般公差: GENERAL TOLERANCE		更改說明: REV. DESCRIPTION			更改說明: REV. DESCRIPTION	
	尺寸範圍 DIM		①			④	
	10.01以上之尺寸	±0.30	②			⑤	
	10.00以內之尺寸	±0.20	③			⑥	
	孔位	±0.10	核准 APPJ	朱小华	2009-3-27	模型: MODEL	料號: ITEM NO
	文件編號	SC-EW-11	審核 CHD				C4501H-12
比例: SCALE	 东莞世权电子有限公司 SHIH CHUAN ELECTRONICS		繪圖 DWN	Liaozting	2009-3-27	規格: SPEC	1.3空接 3X4PIN 公壳


	1	2	3	4
--	---	---	---	---

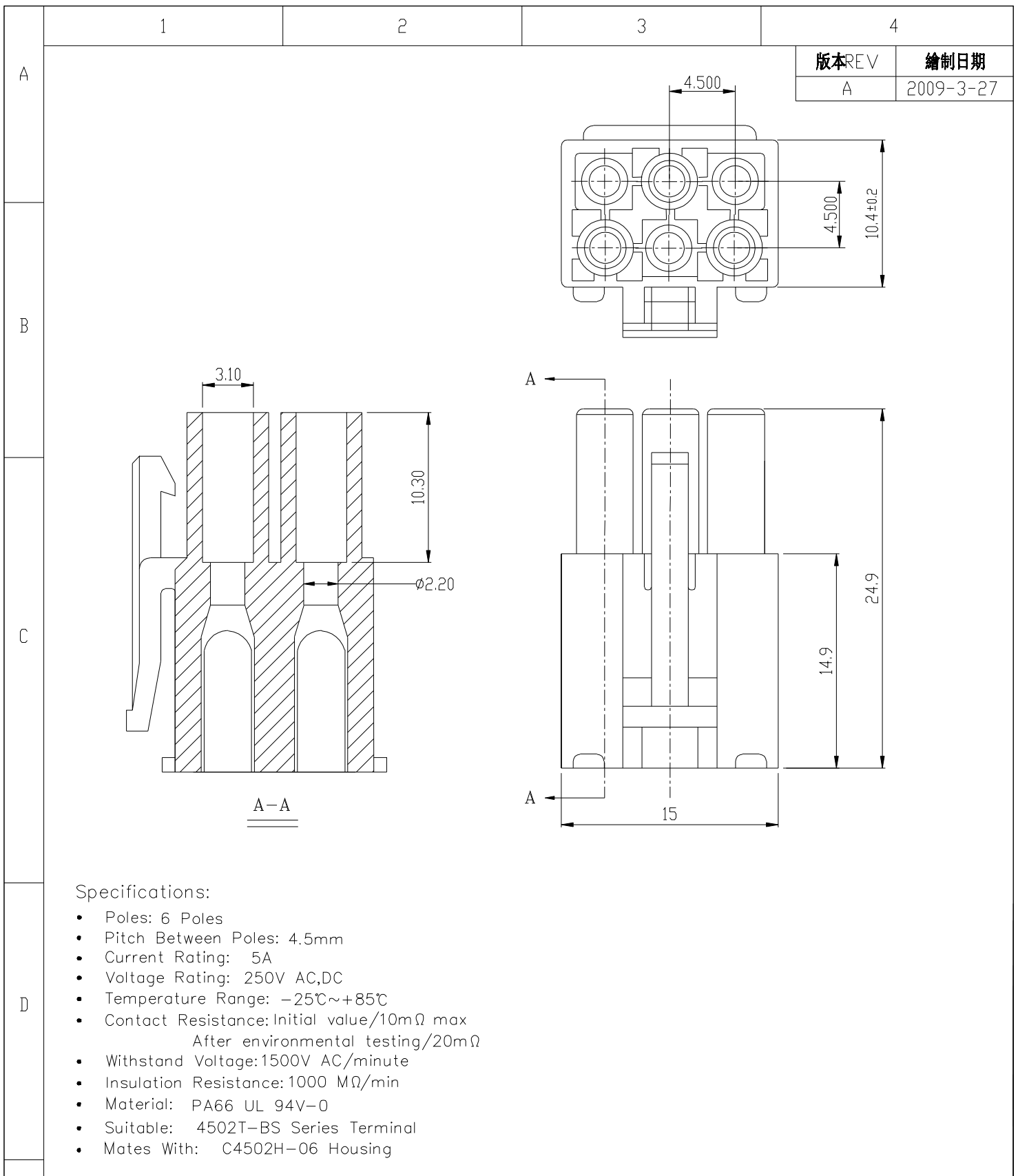
A	版本REV		繪制日期	
	A		2009-3-27	



Specifications:

- Poles: 9 Poles
- Pitch Between Poles: 4.5mm
- Current Rating: 5A
- Voltage Rating: 250V AC,DC
- Temperature Range: -25°C~+85°C
- Contact Resistance: Initial value/10mΩ max  
After environmental testing/20mΩ
- Withstand Voltage: 1500V AC/minute
- Insulation Resistance: 1000 MΩ/min
- Material: PA66 UL 94V-0
- Suitable: 4502T-BS Series Terminal
- Mates With: C4502H-09 Housing

一般公差: GENERAL TOLERANCE		更改說明: REV. DESCRIPTION			更改說明: REV. DESCRIPTION	
尺寸範圍 DIM		①			④	
10.01以上之尺寸	±0.30	②			⑤	
10.00以內之尺寸	±0.20	③			⑥	
孔位	±0.10	核准 APPD	朱小华	2009-3-27	模型: MODEL	料號: ITEM NO
文件編號	SC-EW-11	審核 CHD			C4501H-09	規格: SPEC
		繪圖 DWN	Liaozting	2009-3-27		
比例: SCALE	 东莞世权电子有限公司 SHIH CHUAN ELECTRONICS			1.3空接 3X3PIN 公壳		



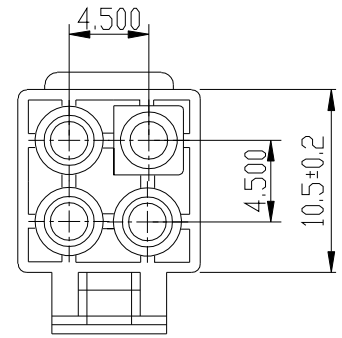
一般公差:GENERAL TOLERANCE		更改說明:REV.DESCRPTION			更改說明:REV.DESCRPTION	
尺寸範圍DIM		①			④	
10.01以上之尺寸	±0.30	②			⑤	
10.00以內之尺寸	±0.20	③			⑥	
孔位	±0.10	核准APPD	朱小华	2009-3-27	模型:	料號: ITEM NO
文件編號		審核CHD			MODEL	C4501H-06
SC-EW-11		繪圖DWN			Liaozting	
比例: SCALE	<b>东莞世权电子有限公司</b> SHIH CHUAN ELECTRONICS			規格: SPEC 1.3空接 2X3PIN 公壳		

	1	2	3	4
--	---	---	---	---

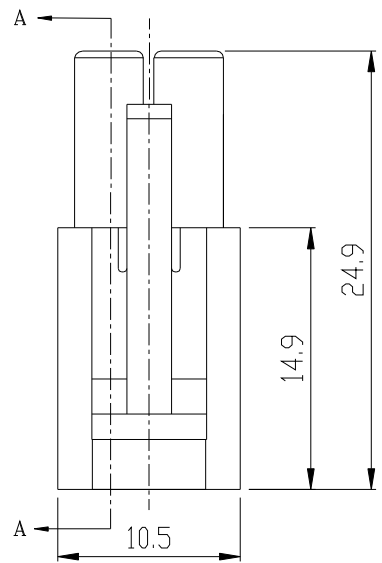
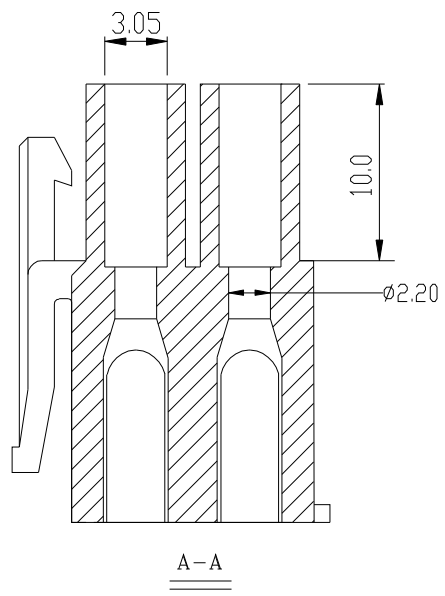
版本REV	繪制日期
A	2009-3-27

A

B




C



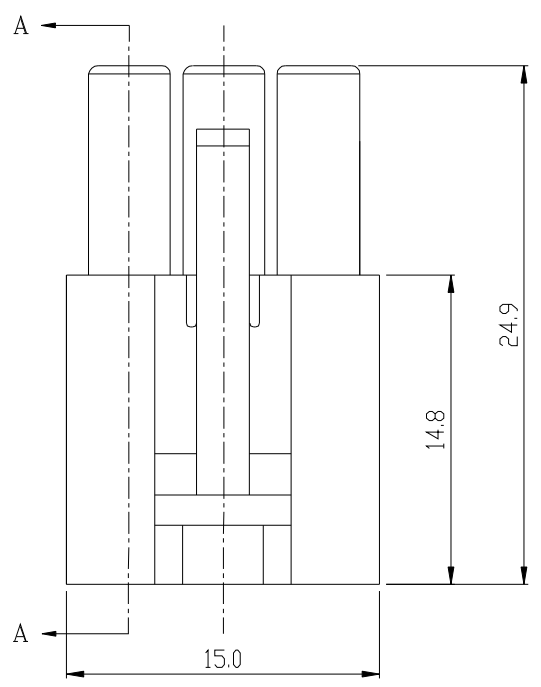
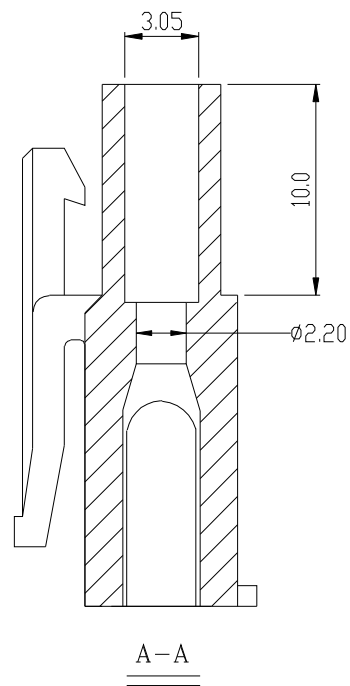
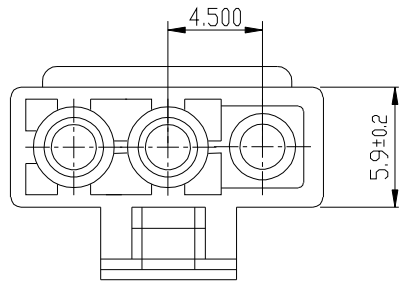
D

Specifications:

- Poles: 4 Poles
- Pitch Between Poles: 4.5mm
- Current Rating: 5A
- Voltage Rating: 250V AC,DC
- Temperature Range: -25°C~+85°C
- Contact Resistance: Initial value/10mΩ max  
After environmental testing/20mΩ
- Withstand Voltage: 1500V AC/minute
- Insulation Resistance: 1000 MΩ/min
- Material: PA66 UL 94V-0
- Suitable: 4502T-BS Series Terminal
- Mates With: C4502H-04 Housing


一般公差: GENERAL TOLERANCE		更改說明: REV. DESCRIPTION			更改說明: REV. DESCRIPTION	
尺寸範圍 DIM		①			④	
10.01 以上之尺寸	±0.30	②			⑤	
10.00 以內之尺寸	±0.20	③			⑥	
孔位	±0.10	核准 APPD	朱小华	2009-3-27	模型: MODEL	料號: ITEM NO
文件編號	SC-EW-11	審核 CHD			C4501H-04	規格: SPEC
		繪圖 DWN	Liaozting	2009-3-27		
比例: SCALE	 东莞世权电子有限公司 SHIH CHUAN ELECTRONICS			1.3 空接 2X2PIN 公壳		

A	1	2	3	4
				版本REV A



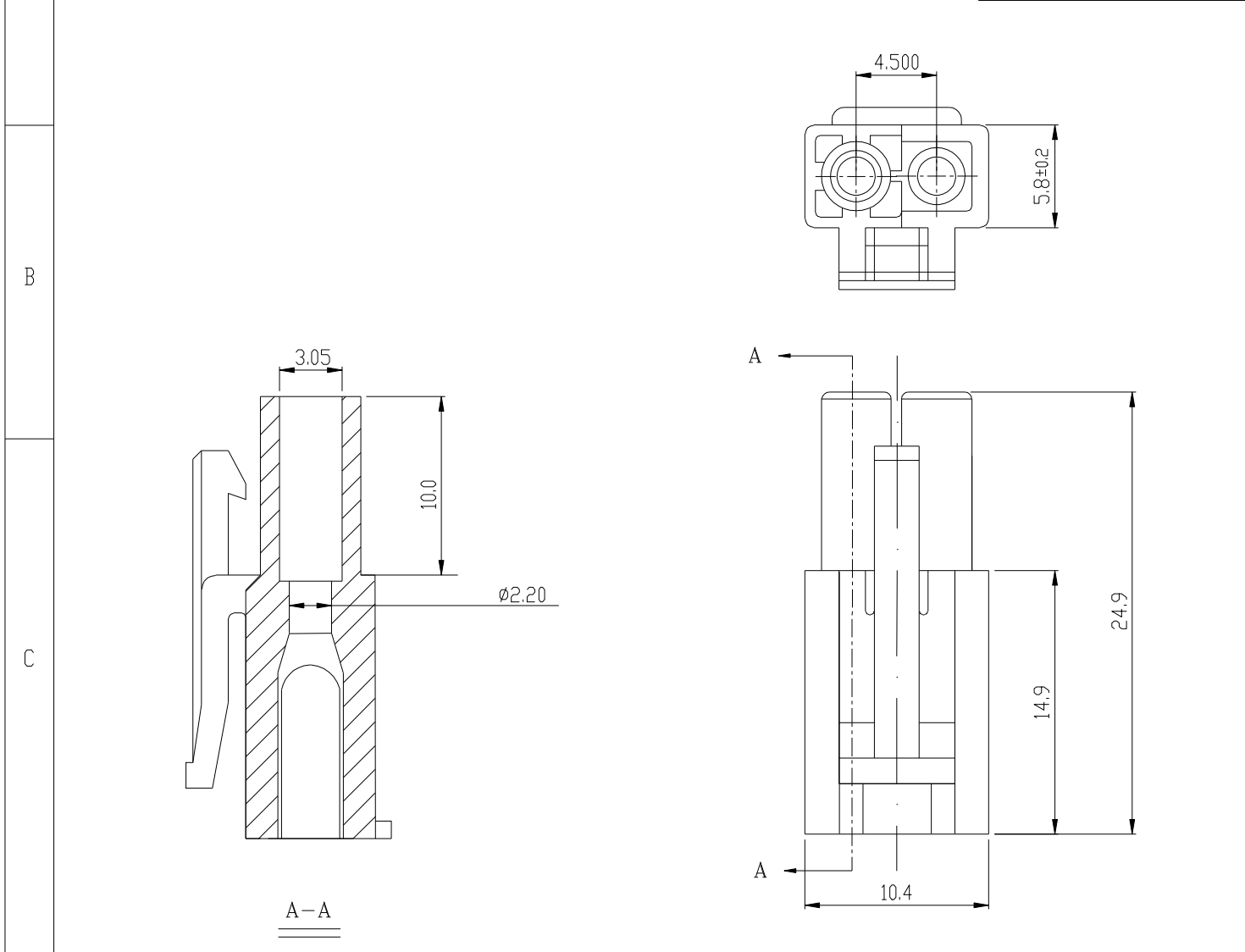
Specifications:

- Poles: 3 Poles
- Pitch Between Poles: 4.5mm
- Current Rating: 5A
- Voltage Rating: 250V AC,DC
- Temperature Range: -25°C~+85°C
- Contact Resistance: Initial value/10mΩ max  
After environmental testing/20mΩ
- Withstand Voltage: 1500V AC/minute
- Insulation Resistance: 1000 MΩ/min
- Material: PA66 UL94V-0 / PA6 UEB GF+30%
- Suitable: 4502T-BS Series Terminal
- Mates With: C4502H-03 Housing

E	一般公差: GENERAL TOLERANCE		更改說明: REV. DESCRIPTION			更改說明: REV. DESCRIPTION	
	尺寸範圍 DIM		①			④	
	10.01以上之尺寸	±0.30	②			⑤	
	10.00以內之尺寸	±0.20	③			⑥	
	孔位	±0.10	核准 APPD	朱小华	2009-3-27	模型: MODEL	料號: ITEM NO C4501H-03
	文件編號 SC-EW-11		審核 CHD				
比例: SCALE		 <b>东莞世权电子有限公司</b> SHIH CHUAN ELECTRONICS			規格: SPEC 1.3 空接 1X3PIN 公壳		


	1	2	3	4
--	---	---	---	---

A				版本REV	繪制日期
				A	2009-3-27



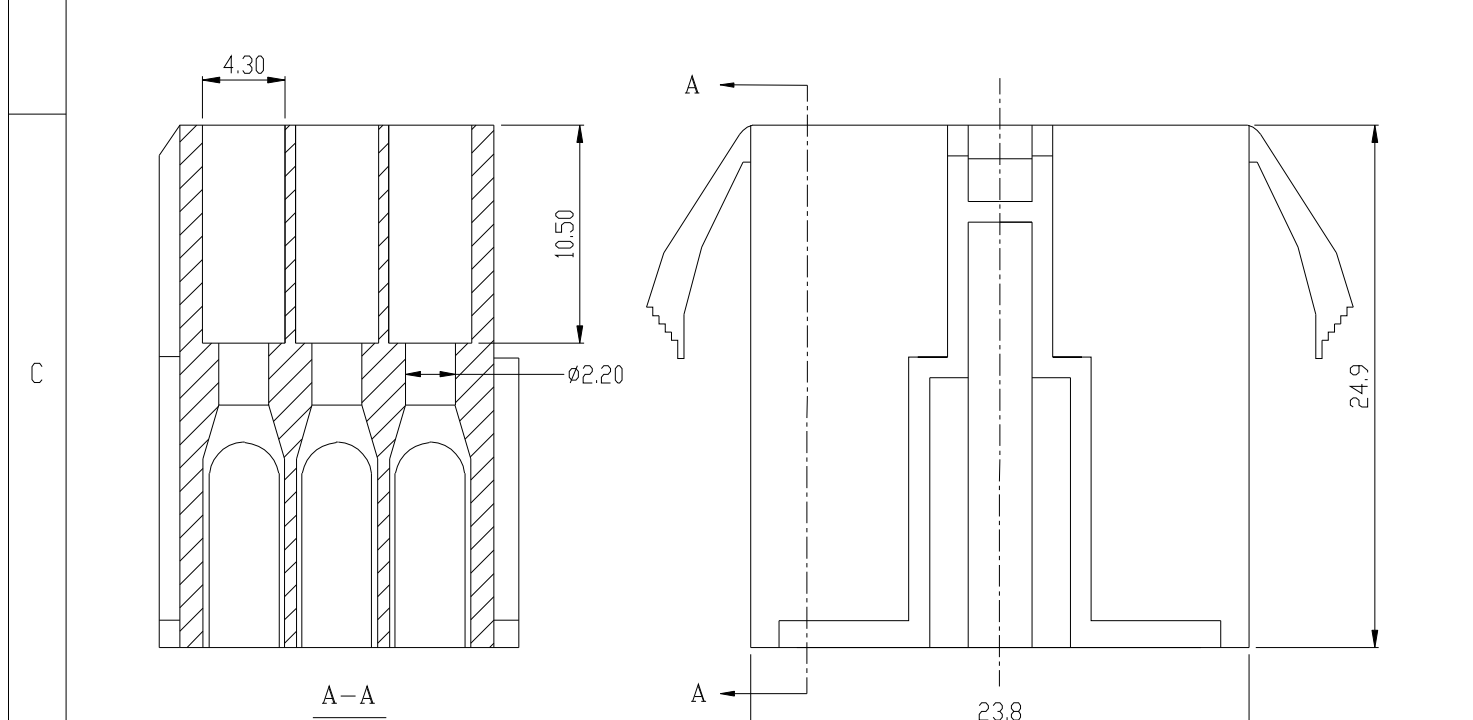
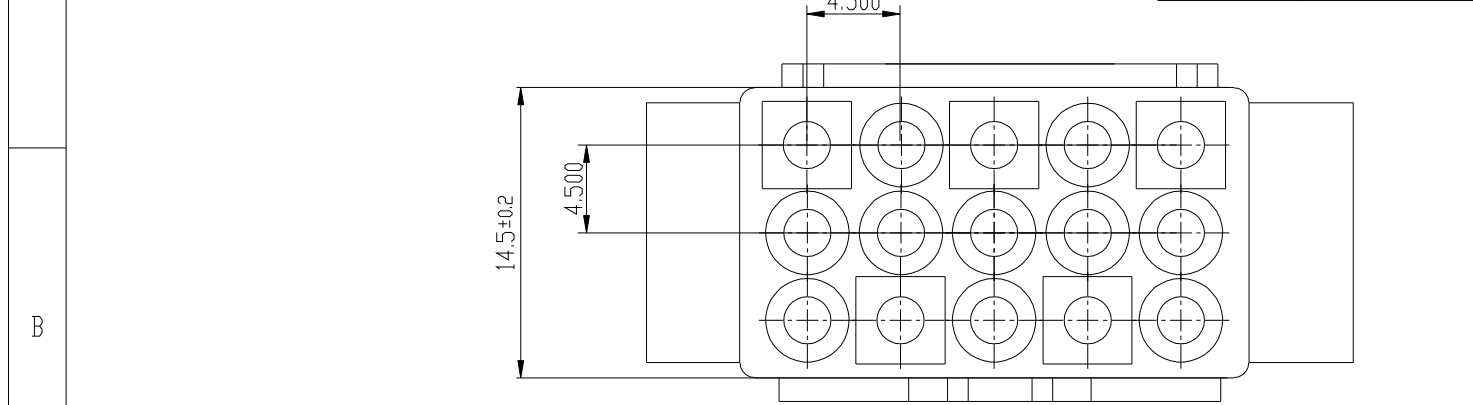
Specifications:

- Poles: 2 Poles
- Pitch Between Poles: 4.5mm
- Current Rating: 5A
- Voltage Rating: 250V AC,DC
- Temperature Range: -25°C~+85°C
- Contact Resistance: Initial value/10mΩ max  
After environmental testing/20mΩ
- Withstand Voltage: 1500V AC/minute
- Insulation Resistance: 1000 MΩ/min
- Material: PA66 UL 94V-0
- Suitable: 4502T-BS Series Terminal
- Mates With: C4502H-02 Housing

一般公差: GENERAL TOLERANCE		更改說明: REV. DESCRIPTION			更改說明: REV. DESCRIPTION	
尺寸範圍 DIM		①			④	
10.01 以上之尺寸	±0.30	②			⑤	
10.00 以內之尺寸	±0.20	③			⑥	
孔位	±0.10	核准 APPJ	朱小华	2009-3-27	模型: MODEL	料號: ITEM NO
文件編號		審核 CHD			C4501H-02	
SC-EW-11		繪圖 DWN	Liaozting	2009-3-27		
比例: SCALE	 <b>东莞世权电子有限公司</b> SHIH CHUAN ELECTRONICS			規格: SPEC 1.3 空接 1X2PIN 公壳		


	1	2	3	4
--	---	---	---	---

A	版本REV	繪制日期
	A	2009-3-27



Specifications:

- Poles: 15 Poles
- Pitch Between Poles: 4.5mm
- Current Rating: 5A
- Voltage Rating: 250V AC,DC
- Temperature Range: -25°C~+85°C
- Contact Resistance: Initial value/10mΩ max  
After environmental testing/20mΩ
- Withstand Voltage: 1500V AC/minute
- Insulation Resistance: 1000 MΩ/min
- Material: PA66 UL94V-0
- Suitable: 4501T-BS Series Terminal
- Mates With: C4501H-15 Housing

一般公差: GENERAL TOLERANCE		更改說明: REV. DESCRIPTION			更改說明: REV. DESCRIPTION	
尺寸範圍 DIM		①			④	
10.01以上之尺寸	±0.30	②			⑤	
10.00以內之尺寸	±0.20	③			⑥	
孔位	±0.10	核准 APPD	朱小华	2009-3-27	模型: MODEL	料號: ITEM NO
文件編號	SC-EW-11	審核 CHD			C4502H-15	
比例: SCALE		繪圖 DWN	Liaozting	2009-3-27	規格: SPEC	1.3空接3X5PIN 母壳
 <b>东莞世权电子有限公司</b> SHIH CHUAN ELECTRONICS						



1

2

3

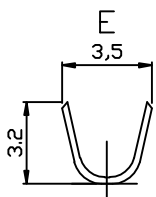
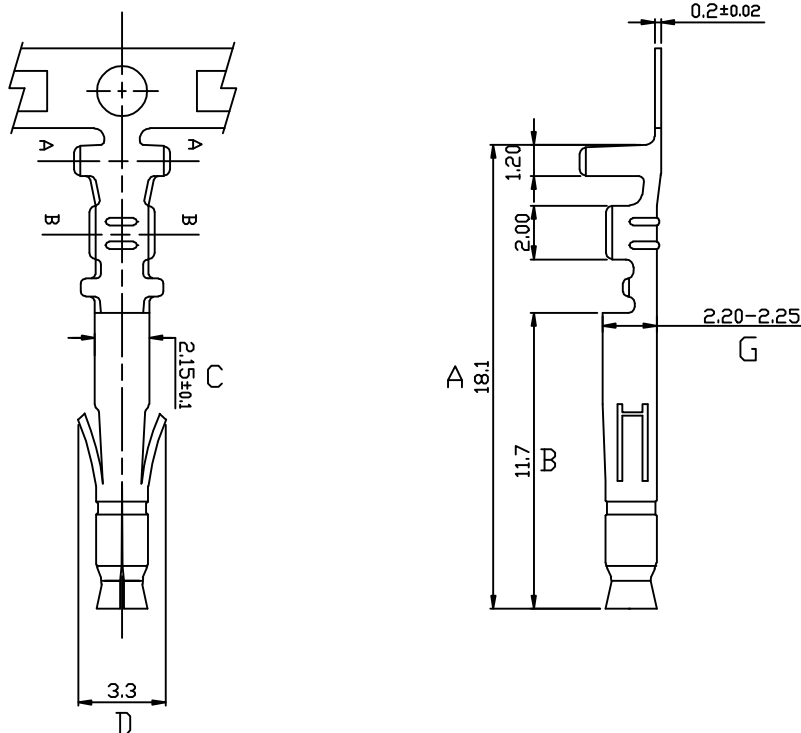
4

版本REV

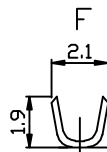
繪制日期

A

2009-2-18



Section A-A



Section B-B

NOTE:

- 1.THICKNESS: 0.20mm
- 2.MATERIAL: BRASS
- 3.FINISH: TIN PLATED
- 4.APPLICABLE WIRE:AWG20-24
- 5.使用量具為電子卡尺

一般公差:GENERAL TOLERANCE

更改說明:REV.DESCRPTION

更改說明:REV.DESCRPTION

尺寸範圍DIM

①

④

.0

±0.30

②

⑤

.00

±0.20

③

⑥

.000

±0.10

核准APPD

朱小华

2009-2-18

模型:

料號: ITEM NO

文件編號

審核CHD

MODEL

C4502T-BS 母端

SC-A-2001T

繪圖DWN

Liaozting

2009-2-18

比例: SCALE



东莞世权电子有限公司  
SHIH CHUAN ELECTRONICS

規格: SPEC

1012T-BS 母端