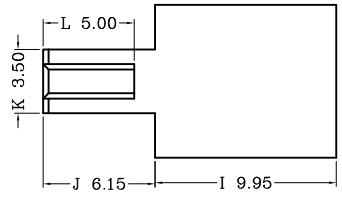
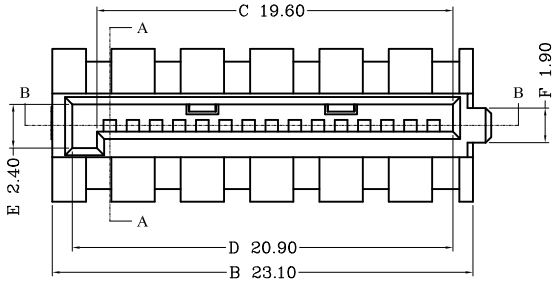
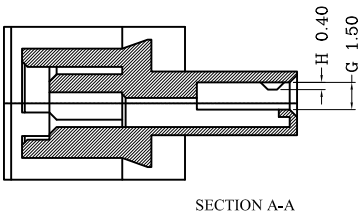


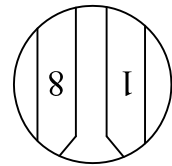
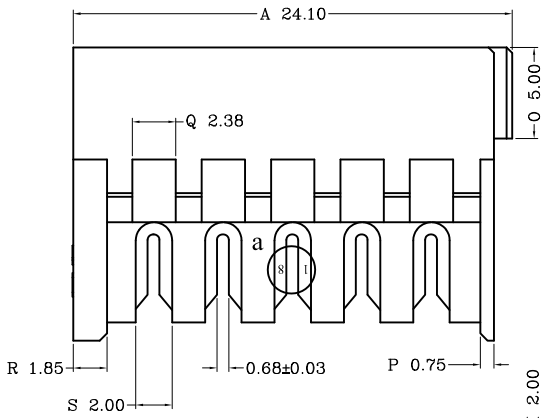
1	2	3	4
---	---	---	---

版本REV	日期
A	2014-01-15

A

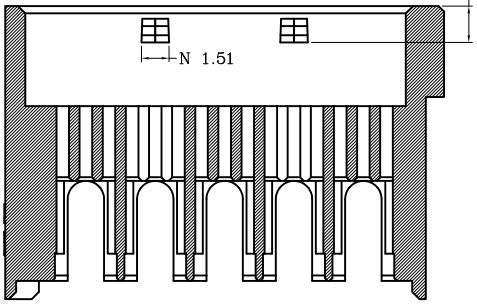


B



a (3:1 18AWG)

C



D

NOTE:

- | | |
|--|---------------------------------|
| 1. TERMINAL MATERIAL THICKNESS: 0.30mm | 5. ACCEPT TERMINAL: 6758-DA |
| 2. TERMINAL MATERIAL: PHOSPHOR BRONZE | 6. APPLICABLE WIRE: 1007# 18AWG |
| 3. CONNETOR MATERIAL: PBT30%GF | |
| 4. TERMINAL FINISH: CONTACT SELECTIVE GOLD-PLATED. | |

E

一般公差: GENERAL TOLERANCE		更改說明: REV.DESCRPTION		更改說明: REV.DESCRPTION	
尺寸範圍DIM		①		④	
.0	±0.20	②		⑤	
.00	±0.15	③		⑥	
.000	±0.10	核准APPD		模型:	料號: ITEM NO
文件編號		審核CHD		MODEL	6758-DH-A-18
SC-EW-11		繪圖DWN	莫才芬	2014-01-15	
比例: SCALE				規格: SPEC	SATA 90°