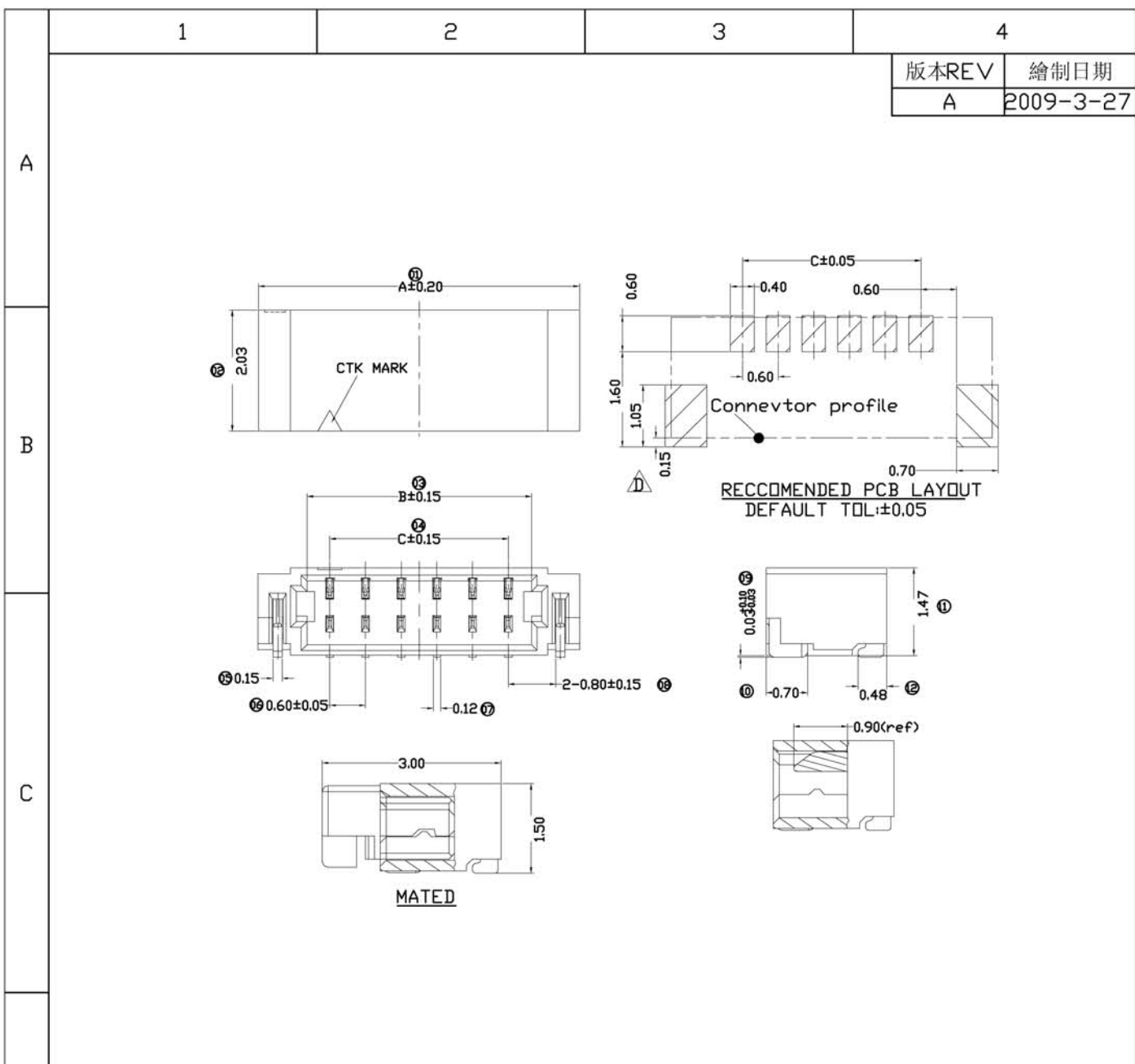


- Specifications:**
- Voltage rating: 30V AC / DC
 - Current rating: 0.2A AC / DC
 - Withstanding voltage: 200V AC/minute
 - Temperature range: -25°C~+85°C
 - Insulation resistance: 100M \geq Ω
 - Contact resistance: 30m \leq Ω
 - After environmental testing 40m \leq Ω
 - Welding Board Angle I-HSG+hardware
 - Plating style: Blank-Tin plating, G-Gold plated
 - Material LP-LCP 94V-0
 - Color Blank-natural color
 - HF-Halogen free

一般公差:GENERAL TOLERANCE		更改說明:REV.DESCRPTION		更改說明:REV.DESCRPTION	
尺寸範圍DIM		A		A	
10.01以上之尺寸	±0.20	A		A	
10.00以內之尺寸	±0.15	A		A	
孔位	±0.02	核准APPD		模型:	料號: ITEM NO
文件編號	SC-EW-11	審核CHD		MODEL	A0601-H00-NP
比例: SCALE	SHIH CHUAN ELECTRONICS			規格: SPEC	0.60mm



- Specifications**
- Voltage rating: 30V AC / DC
 - Current rating: 0.2A AC / DC
 - Withstanding voltage: 200V AC/minute
 - Temperature range: -25°C~+85°C
 - Insulation resistance:100M \geq Ω
 - Contact resistance:30m \leq Ω
 - Category W-wafer
 - Welding Board Angle:R-90°
 - Welding Way:S-SMT
 - Material LP-LCP
 - Planting Category: V: All Gold-Plated
 - *01-Gold Flash ; *02-2u" ; *03-3u"
 - *05-5u" *10-10u" *15-15u"
 - SN-Bright tin plating 70-120u"
 - SW-Fog Tin plating
 - HS-High temperature Tin
 - Color: Blank-natural color
- | N | C+2.4 | C+0.78 | (N-1)*0.6 |
|------|-------|--------|-----------|
| 12 | 9.00 | 7.38 | 7.20 |
| 10 | 7.80 | 6.18 | 6.60 |
| 8 | 6.60 | 4.98 | 4.20 |
| 6 | 5.40 | 3.78 | 3.00 |
| 4 | 4.20 | 2.58 | 1.80 |
| CKTS | DIM A | DIIM B | DIM C |

一般公差:GENERAL TOLERANCE		更改說明:REV.DESCRPTION		更改說明:REV.DESCRPTION	
尺寸範圍DIM		A		A	
10.01以上之尺寸	±0.20	A		A	
10.00以內之尺寸	±0.15	A		A	
孔位	±0.02	核准APPD		模型:	料號: ITEM NO
文件編號	SC-EW-11	審核CHD		MODEL	A0601-W00-NP
比例: SCALE	SHIH CHUAN ELECTRONICS			規格: SPEC	0.60mm