

1

2

3

4

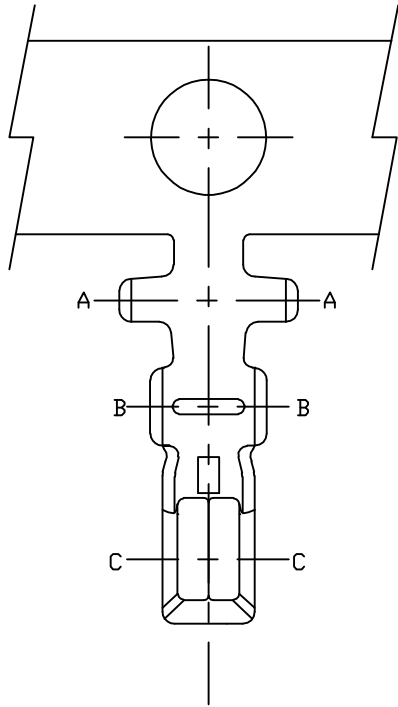
版本REV

繪制日期

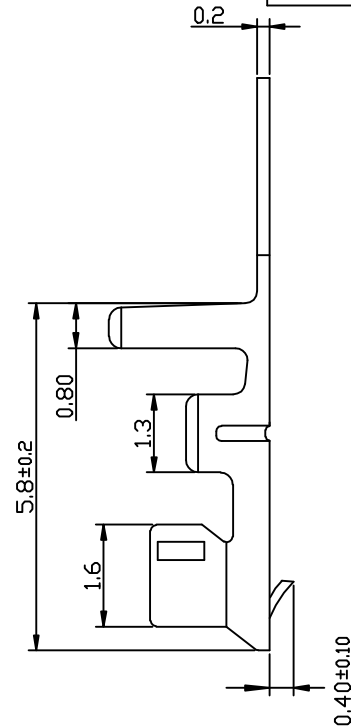
A

2009-2-24

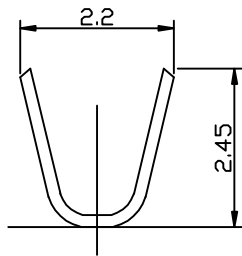
A



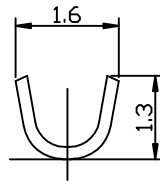
B



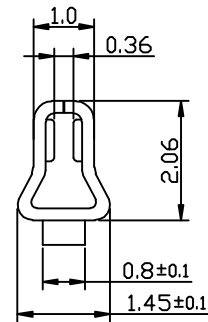
C



Section A-A



Section B-B



Section C-C

D

NOTE:

- 1.THICKNESS: 0.20mm
- 2.MATERIAL: PHOSPHOR BRONZE
- 3.FINISH: TIN PIATED
- 4.APPLICABLE WIRE:AWG24-30
- 5.使用量具為電子卡尺

E

一般公差:GENERAL TOLERANCE

更改說明:REV.DESCRPTION

更改說明:REV.DESCRPTION

尺寸範圍DIM



.0

±0.30



.00

±0.20



.000

±0.10

核准APPD

朱小华

2009-2-24

模型:

料號: ITEM NO

文件編號

審核CHD

MODEL

A2001TOP-00

SC-A-2001T

繪圖DWN

Liaozting

2009-2-24

比例: SCALE



SHIH CHUAN ELECTRONICS

規格: SPEC

2.00mm Crimp Style Connectors

1

2

3

4

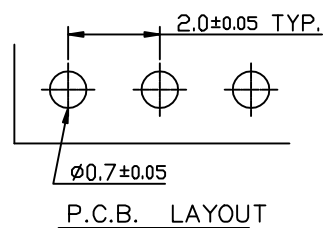
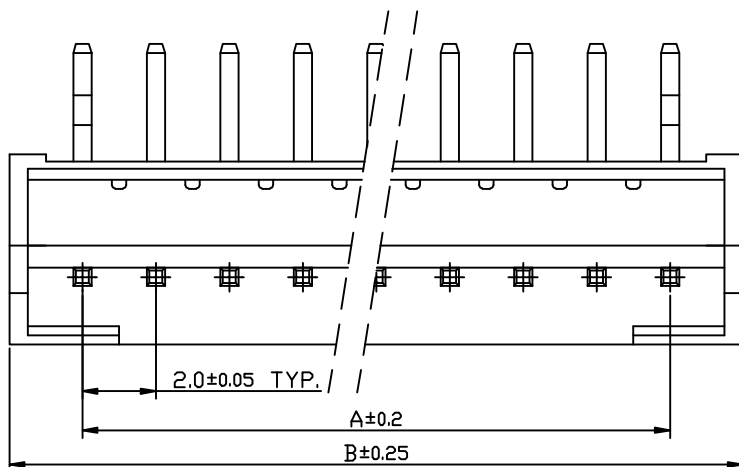
版本REV

繪制日期

A

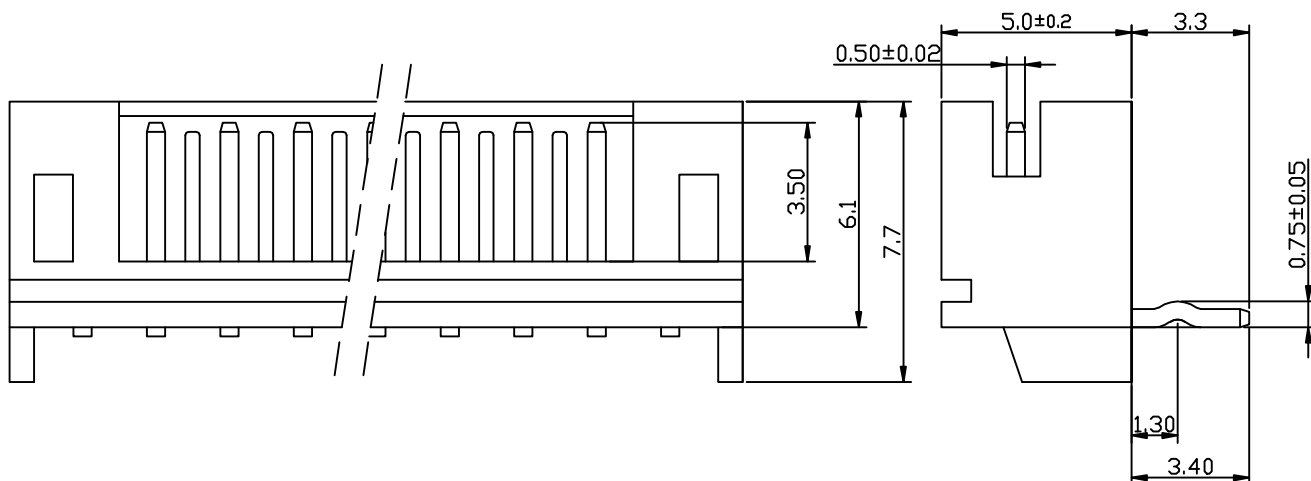
2009-3-27

A



B

C



NOTE:

- Welding Board Angle: R- Right Angle 90°
- Material: NYLON 66 UL 94V-0
- Material(Pin): Brass
- Finish(Pin): Matee Tin-Plating

D

Poles	Dimension mm		Poles	Dimension mm	
	A	B		A	B
02	2.00	5.9	10	18.00	21.9
03	4.00	7.9	11	20.00	23.9
04	6.00	9.9	12	22.00	25.9
05	8.00	11.9	13	24.00	27.9
06	10.00	13.9	14	26.00	29.9
07	12.00	15.9	15	28.00	31.9
08	14.00	17.9	16	30.00	33.9
09	16.00	19.9			

E

一般公差: GENERAL TOLERANCE

更改說明: REV. DESCRIPTION

更改說明: REV. DESCRIPTION

尺寸範圍DIM

①

④

10.01以上之尺寸

±0.20

②

⑤

10.00以內之尺寸

±0.15

③

⑥

孔位

±0.10

核准APPD

朱小华

2009-3-27

模型:

料號: ITEM NO

文件編號

審核CHD

MODEL

A2001WR-00-NP

SC-EW-11

繪圖DWN

Liaozting

2009-3-27

比例: SCALE



SHIH CHUAN ELECTRONICS

規格: SPEC

2.00mm Crimp Style Connectors

1

2

3

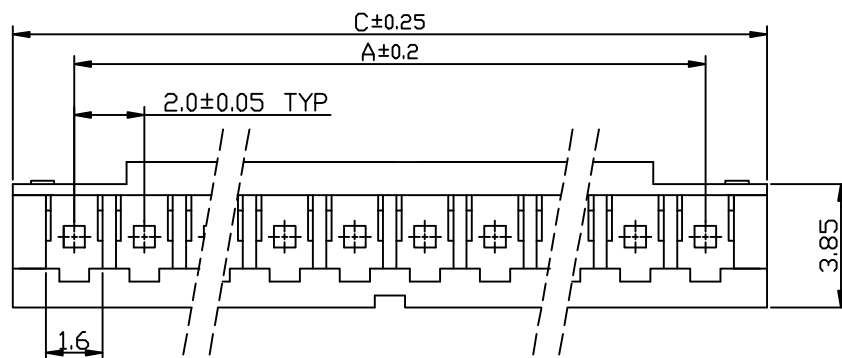
4

A

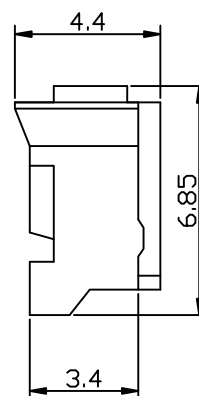
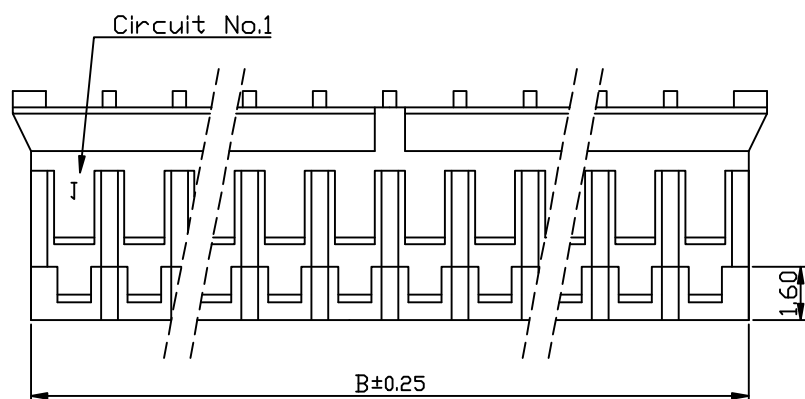
版本REV 繪制日期

A 2009-3-27

B



C



D

NOTE:

- Material: NYION PA66 94V-0
- Poles: 2~16 Poles

Poles	Dimension mm			Poles	Dimension mm		
	A	B	C		A	B	C
02	2.00	4.65	5.80	10	18.00	20.65	21.80
03	4.00	6.65	7.80	11	20.00	22.65	23.80
04	6.00	8.65	9.80	12	22.00	24.65	25.80
05	8.00	10.65	11.80	13	24.00	26.65	27.80
06	10.00	12.65	13.80	14	26.00	28.65	29.80
07	12.00	14.65	15.80	15	28.00	30.65	31.80
08	14.00	16.65	17.80	16	30.00	32.65	33.80
09	16.00	18.65	19.80				

E

一般公差:GENERAL TOLERANCE

更改說明:REV.DESCRPTION

更改說明:REV.DESCRPTION

尺寸範圍DIM



10.01以上之尺寸

±0.30



10.00以内之尺寸

±0.20



孔位

±0.10

核准APPD

朱小华

2009-3-27

模型:

料號: ITEM NO

文件編號

審核CHD

MODEL

A2001H-00-NP

SC-EW-11

繪圖DWN

Liaozting

2009-3-27

比例: SCALE



SHIH CHUAN ELECTRONICS

規格: SPEC

2.00mm Crimp Style Connectors

1

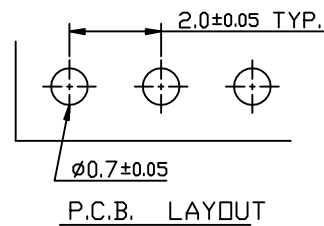
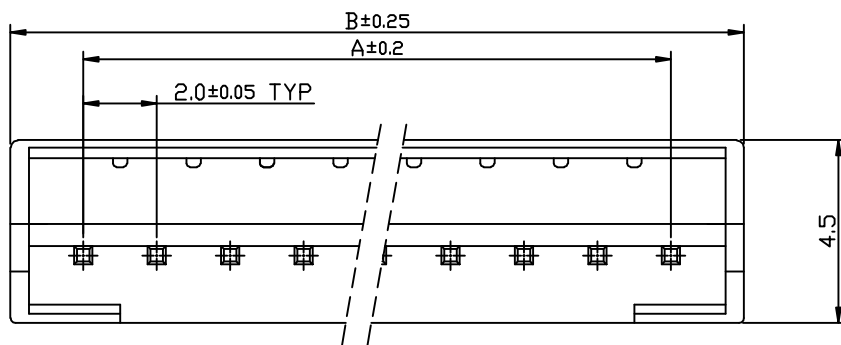
2

3

4

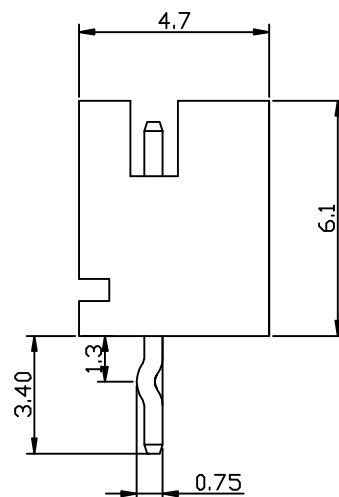
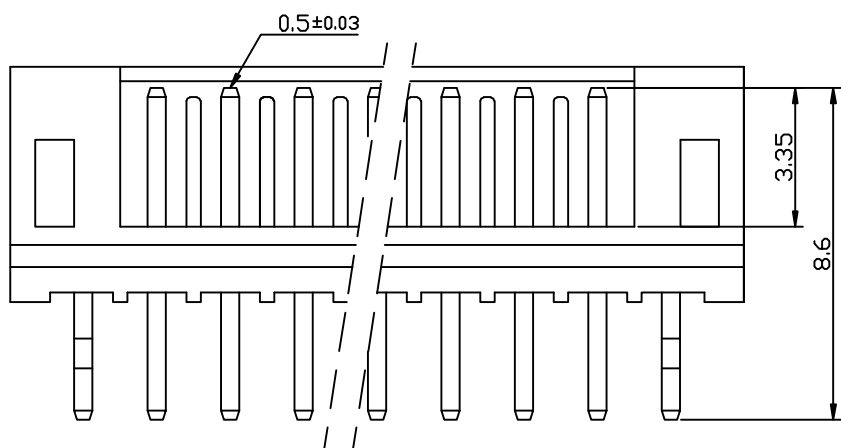
版本REV	繪制日期
A	2009-3-27

A



B

C



D

NOTE:

- Welding Board Angle: V-Straight 180°
- Material: NYLON 66 UL 94V-0
- Material(Pin): Brass
- Finish(Pin): Matee Tin-Plating

Poles	Dimension mm		Poles	Dimension mm	
	A	B		A	B
02	2.00	5.9	10	18.00	21.9
03	4.00	7.9	11	20.00	23.9
04	6.00	9.9	12	22.00	25.9
05	8.00	11.9	13	24.00	27.9
06	10.00	13.9	14	26.00	29.9
07	12.00	15.9	15	28.00	31.9
08	14.00	17.9	16	30.00	33.9
09	16.00	19.9			

E

一般公差: GENERAL TOLERANCE

更改說明: REV. DESCRIPTION

更改說明: REV. DESCRIPTION

尺寸範圍DIM

①

④

10.01以上之尺寸

±0.20

②

⑤

10.00以內之尺寸

±0.15

③

⑥

孔位

±0.10

核准APPD

朱小华

2009-3-27

模型:
MODEL

料號: ITEM NO

文件編號

審核CHD

SC-EW-11

繪圖DWN

Liaozting

2009-3-27

A2001WR-00-NP

比例: SCALE



SHIH CHUAN ELECTRONICS

規格: SPEC

2.00mm Crimp Style Connectors