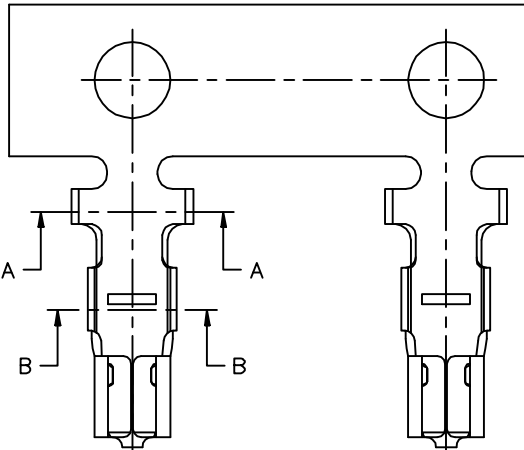
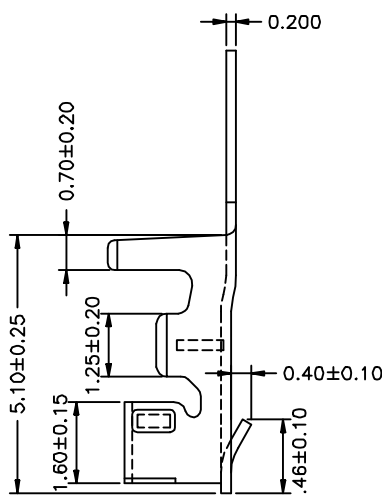
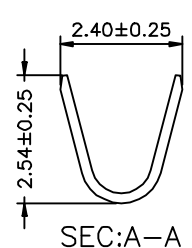
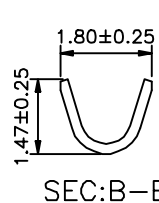
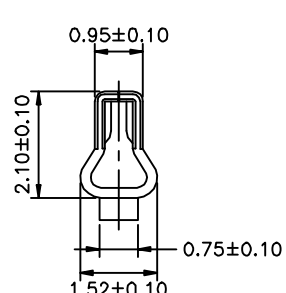



	1	2	3	4		
A				版本REV	繪制日期	
				A	2009-2-18	
B						
C						
D	<p>NOTE:</p> <p>1.THICKNESS: 0.20mm 2.MATERIAL: Phosphor Bronze 3.FINISH: TIN PIATED 4.APPLICABLE WIRE:AWG24-28 5.使用量具為電子卡尺</p>					
E	一般公差:GENERAL TOLERANCE		更改說明:REV.DESCRPTION		更改說明:REV.DESCRPTION	
	尺寸範圍DIM		△		△	
	.0	±0.30	△		△	
	.00	±0.20	△		△	
	.000	±0.10	核准APPD	朱小华	2009-2-18	模型: 料號: ITEM NO
	文件編號		審核CHD			
	SC-A-2500T		繪圖DWN	Liaozting	2009-2-18	MODEL A2007TOP-2
比例: SCALE		 SHIH CHUAN ELECTRONICS			規格: SPEC 2.00mm Crimp Style Connector	

1

2

3

4

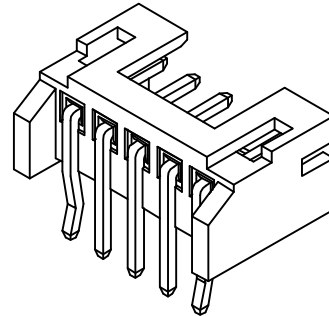
版本REV

繪制日期

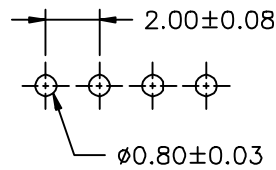
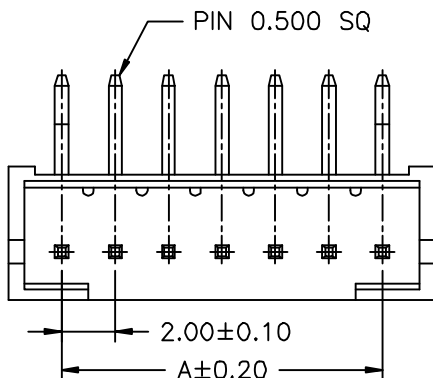
A

2009-3-28

A



B



P.C.B LAYOUT

Ordering Information:

A2007WR00-XP $\frac{*}{2}$

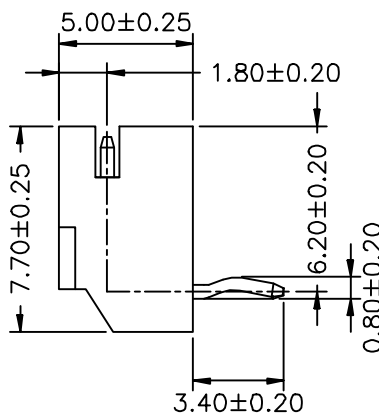
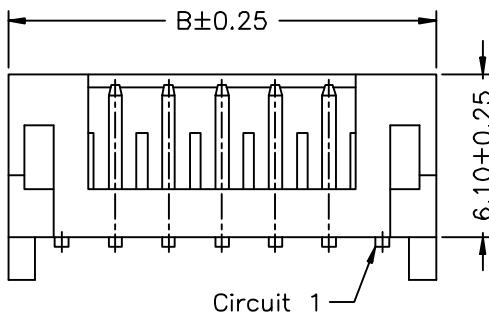
1.Part No.

2.Style:

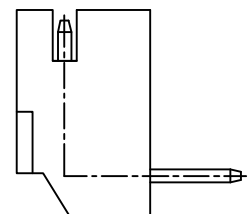
1-Type 1

2-Type 2

C



TYPE 1



TYPE 2

D

NOTE:

- Welding Board Angle: R-Right Angle 90°
- Material: PA66 UL94V-0
- Material(Pin): Brass
- Finish(Pin): Tin-Plated
- Row No.-Pin No.: NP-02P-15P

PART NO.	Dimensions	
	A	B
02P	2.00	6.00
03P	4.00	8.00
04P	6.00	10.00
05P	8.00	12.00
06P	10.00	14.00
07P	12.00	16.00
08P	14.00	18.00
09P	16.00	20.00
10P	18.00	22.00
11P	20.00	24.00
12P	22.00	26.00
13P	24.00	28.00
14P	26.00	30.00
15P	28.00	32.00

E

一般公差: GENERAL TOLERANCE

更改說明: REV. DESCRIPTION

更改說明: REV. DESCRIPTION

尺寸範圍DIM

①

④

10.01以上之尺寸

±0.20

②

⑤

10.00以內之尺寸

±0.15

③

⑥

孔位

±0.10

核准APPD

朱小华

2009-3-28

模型:

料號: ITEM NO

文件編號

審核CHD

MODEL

A2007WR00-NP*

SC-EW-11

繪圖DWN

Liaozting

2009-3-28

比例: SCALE



SHIH CHUAN ELECTRONICS

規格: SPEC

2.00mm Crimp Style Connectors

1

2

3

4

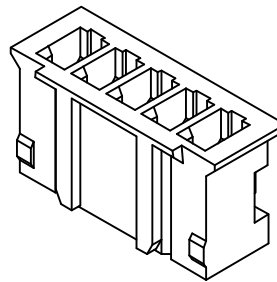
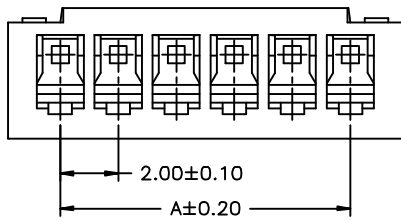
版本REV

繪制日期

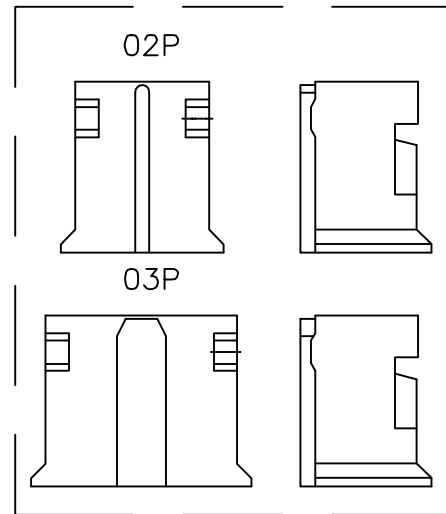
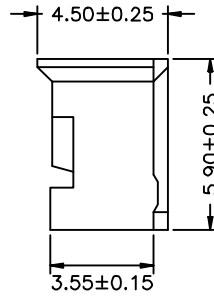
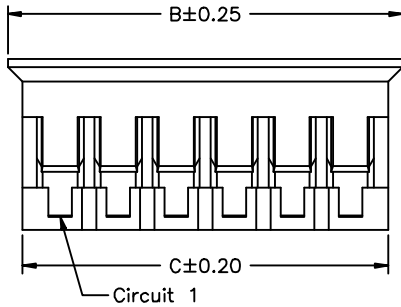
A

2009-3-28

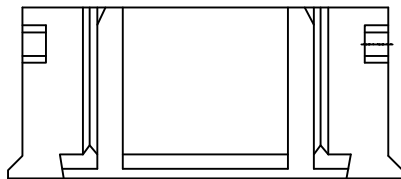
A



B



C



D

NOTE:

- Material: PA66 94V-0
- Row No.-Pin No.: NP-2P-15P

Circuit No.	Dimensions		
	A	B	C
02P	2.00	5.60	4.60
03P	4.00	7.60	6.60
04P	6.00	9.60	8.60
05P	8.00	11.60	10.60
06P	10.00	13.60	12.60
07P	12.00	15.60	14.60
08P	14.00	17.60	16.60
09P	16.00	19.60	18.60
10P	18.00	21.60	20.60
11P	20.00	23.60	22.60
12P	22.00	25.60	24.60
13P	24.00	27.60	26.60
14P	26.00	29.60	28.60
15P	28.00	31.60	30.60

一般公差: GENERAL TOLERANCE

更改說明: REV. DESCRIPTION

更改說明: REV. DESCRIPTION

尺寸範圍DIM



10.01以上之尺寸

±0.20



10.00以內之尺寸

±0.15



孔位

±0.10

核准APPD

朱小华

2009-3-28

模型:

料號: ITEM NO

文件編號

審核CHD

MODEL

A2007H00-NP

SC-EW-11

繪圖DWN

Liaozting

2009-3-28

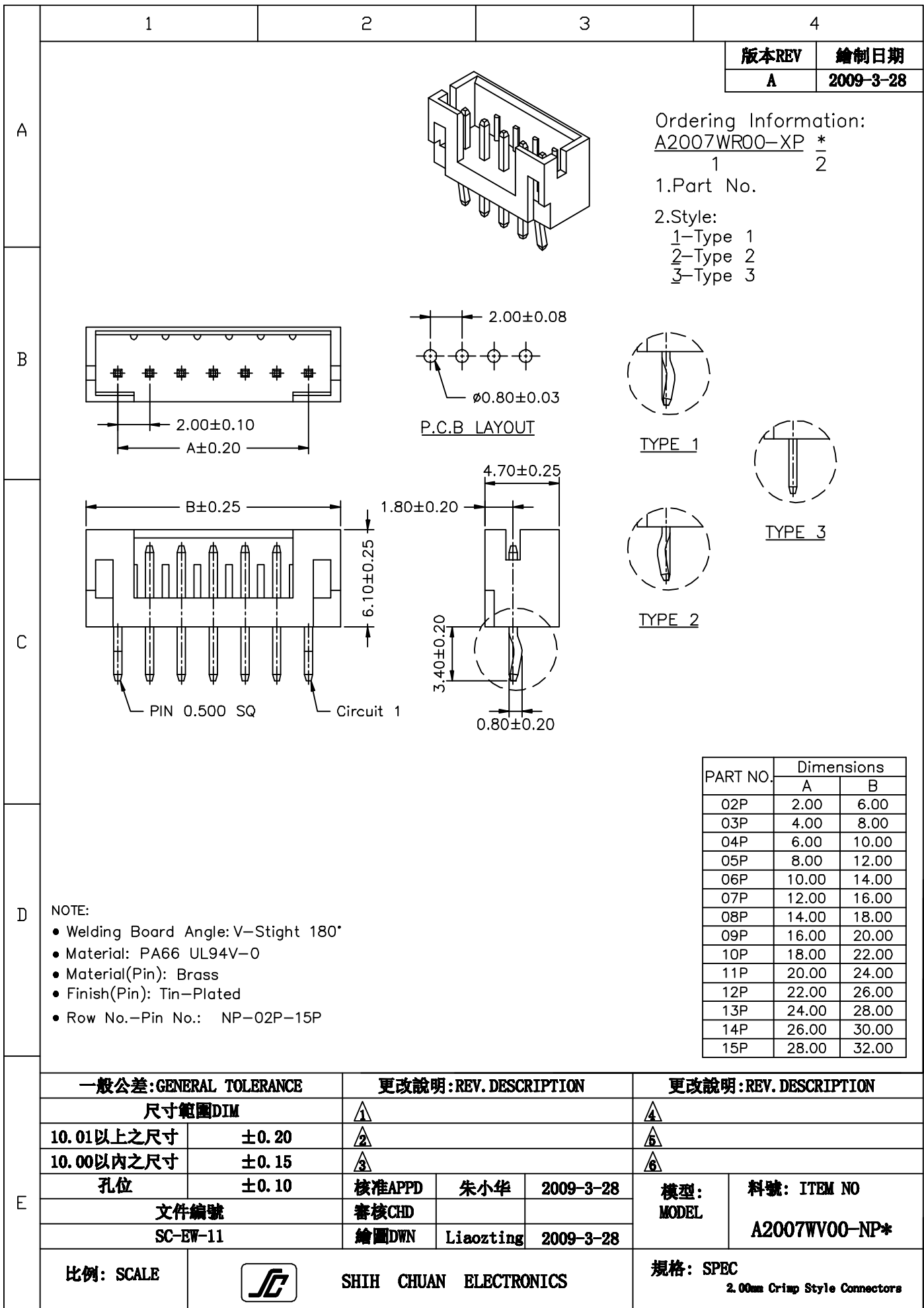
比例: SCALE



SHIH CHUAN ELECTRONICS

規格: SPEC

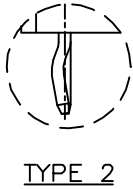
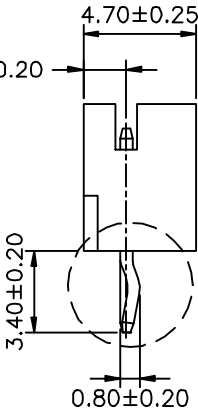
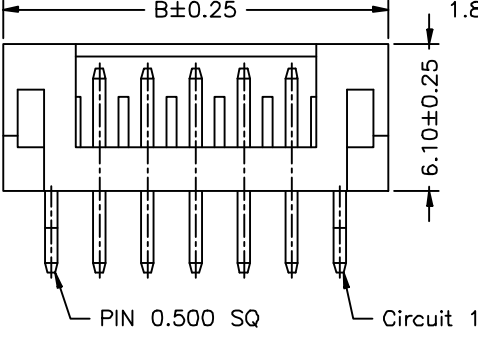
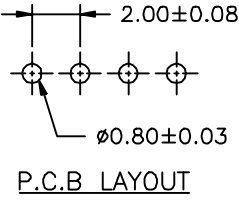
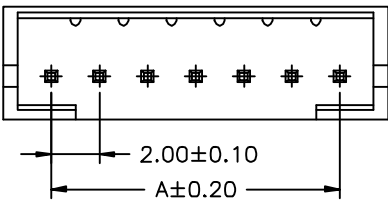
2.00mm Crimp Style Connectors



版本REV	繪制日期
A	2009-3-28

Ordering Information:
 A2007WR00-XP *
 1 2

- 1.Part No.
 2.Style:
 1-Type 1
 2-Type 2
 3-Type 3



PART NO.	Dimensions	
	A	B
02P	2.00	6.00
03P	4.00	8.00
04P	6.00	10.00
05P	8.00	12.00
06P	10.00	14.00
07P	12.00	16.00
08P	14.00	18.00
09P	16.00	20.00
10P	18.00	22.00
11P	20.00	24.00
12P	22.00	26.00
13P	24.00	28.00
14P	26.00	30.00
15P	28.00	32.00

- NOTE:
- Welding Board Angle: V-Stight 180°
 - Material: PA66 UL94V-0
 - Material(Pin): Brass
 - Finish(Pin): Tin-Plated
 - Row No.-Pin No.: NP-02P-15P

一般公差: GENERAL TOLERANCE		更改說明: REV. DESCRIPTION			更改說明: REV. DESCRIPTION	
尺寸範圍DIM		①			④	
10.01以上之尺寸	±0.20	②			⑤	
10.00以內之尺寸	±0.15	③			⑥	
孔位	±0.10	核准APPD	朱小华	2009-3-28	模型: MODEL	料號: ITEM NO
文件編號	SC-EW-11	審核CHD			A2007WV00-NP*	規格: SPEC 2.00mm Crimp Style Connectors
		繪圖DWN	Liaozting	2009-3-28		
比例: SCALE						