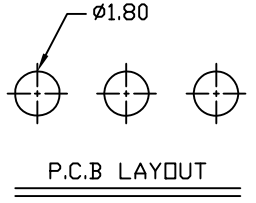
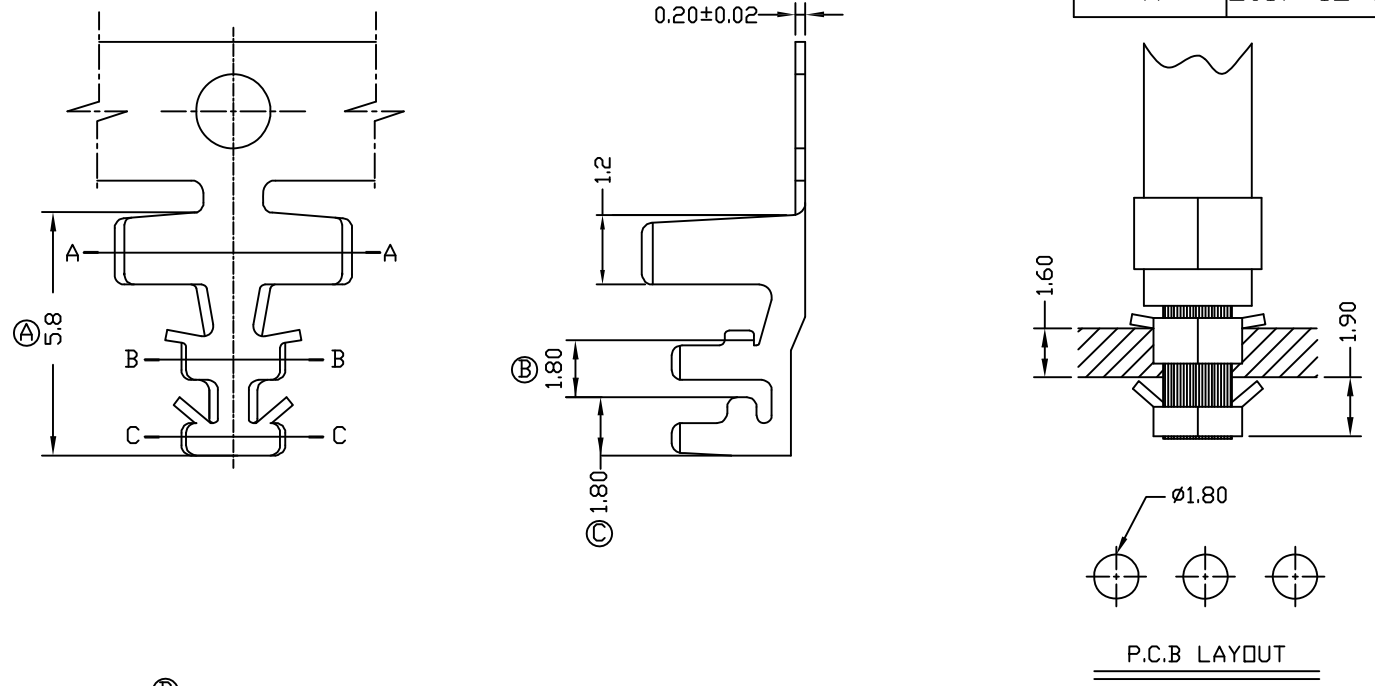
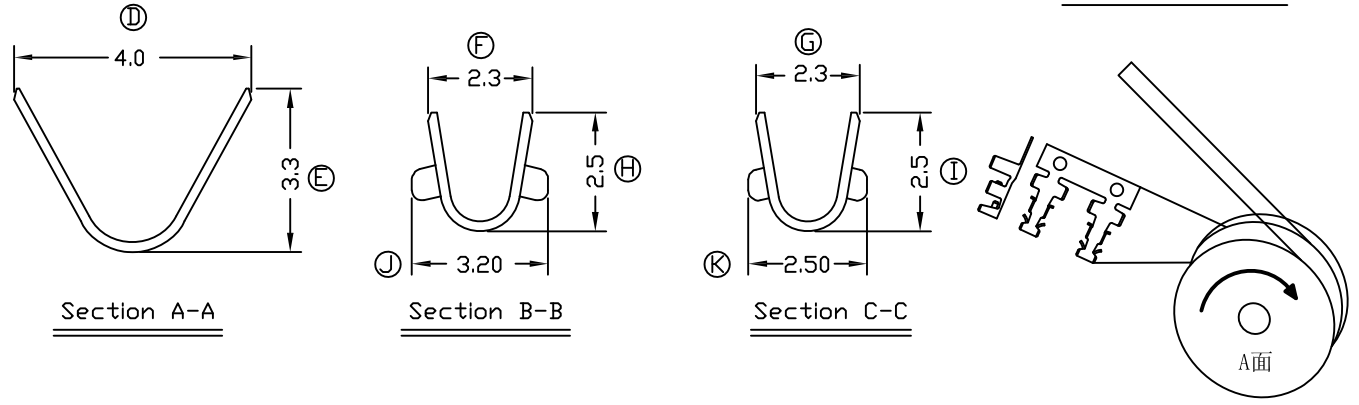


版本REV	修改日期
A	2017-12-18

A
B



C



成品捲料方向. 如圖所示
端子头部朝A面, PVC包脚向上

D

NOTE:

- | | |
|--|--|
| <ul style="list-style-type: none"> 1. THICKNESS: 0.20mm 2. MATERIAL: PHOSPHOR BRONZE 3. FINISH: Tin-PLATE 60μ" 4. APPLICABLE WIRE: AWG18-24# | <ul style="list-style-type: none"> 5. P.C. BOARD HOLE: 1.8Ømm. 6. P.C. BOARD THICKNESS: 1.6mm. 7. STANDARD PACKING: 8000PCS/R 8. 此产品符合RoHS指令要求 |
|--|--|

E

一般公差: GENERAL TOLERANCE		更改說明: REV. DESCRIPTION			更改說明: REV. DESCRIPTION	
尺寸範圍DIM		Ⓐ			Ⓐ	
.0	±0.30	Ⓑ			Ⓑ	
.00	±0.20	Ⓒ			Ⓒ	
.000	±0.10	核准APPD	朱小华	2017-12-18	模型:	料號: ITEM NO
文件編號		審核CHD	Tony	2017-12-18	MODEL	33093PS-2AF-T
SC-EW-11		繪圖DWN	廖政庭	2017-12-18		

比例: SCALE



东莞市世权电子有限公司
SHIH CHUAN ELECTRONICS
http://www.dgscetw.com

規格: SPEC

P.C.B 1.8Ø